

WAAS CH <b>97518</b> <b>W25A</b>	APP CRS <b>256°</b>	Rwy Ldg TDZE Apt Elev	<b>6248</b> <b>5507</b> <b>5507</b>
----------------------------------------	------------------------	-----------------------------	-------------------------------------------

# RNAV (GPS) RWY 25

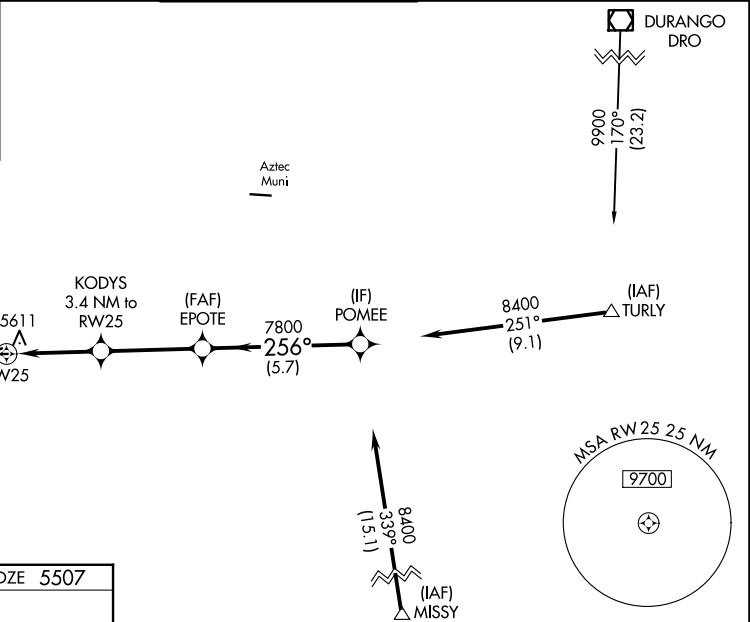
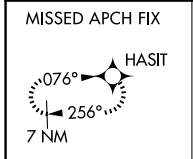
FOUR CORNERS RGNL (FMN)

RNP APCH-GPS.

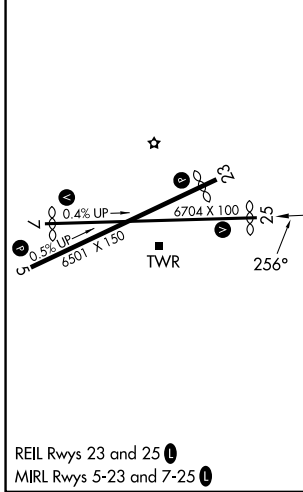
**⚠** Baro-VNAV and VDP NA when using Durango altimeter setting. For uncompensated Baro-VNAV systems, LNAV/VNAV NA below -16°C or above 54°C. Circling NA for Cat D southeast of Rwy 5 and south of Rwy 25. When local altimeter setting not received, use Durango altimeter setting and increase LPV DA to 5950 feet and all visibilities  $\frac{3}{8}$  SM. Increase LNAV/VNAV DA to 6312 feet and all visibilities  $\frac{3}{8}$  SM. Increase all MDAs 260 feet and LNAV visibilities Cat C/D  $\frac{3}{4}$  SM, and Circling visibility Cat B  $\frac{1}{4}$  SM and Cat C  $\frac{1}{2}$  SM.

MISSED APPROACH: Climb to 8000 direct HASIT and hold.

ATIS <b>127.15</b>	DENVER CENTER <b>118.575 348.7</b>	FARMINGTON TOWER * <b>118.9 (CTAF) 0 257.8</b>	GND CON <b>121.7</b>	UNICOM <b>122.95</b>
-----------------------	---------------------------------------	---------------------------------------------------	-------------------------	-------------------------



ELEV 5507	<b>D</b>	TDZE 5507
-----------	----------	-----------



8000	HASIT				
RW25		KODYS 3.4 NM to RW25	EPOTE 7800	POMEE 8400	GP 3.00° TCH 56
1.9 NM to RW25		1.9 NM	3.6 NM	5.7 NM	
CATEGORY	A	B	C	D	
LPV DA		5707- $\frac{3}{4}$	200 (200- $\frac{3}{4}$ )		
LNAV/VNAV DA		6069-1 $\frac{5}{8}$	562 (600-1 $\frac{5}{8}$ )		
LNAV MDA		5880-1	373 (400-1)		
CIRCLING	6020-1 513 (600-1)	6140-1 633 (700-1)	6380-2 $\frac{1}{2}$ 873 (900-2 $\frac{1}{2}$ )	6400-3 893 (900-3)	

SW-1, 16 APR 2026 to 14 MAY 2026

SW-1, 16 APR 2026 to 14 MAY 2026