

WAAS CH 90110 W07A	APP CRS 076°	Rwy Ldg TDZE Apt Elev	6248 5502 5507
--	------------------------	-----------------------------	---

RNAV (GPS) RWY 7

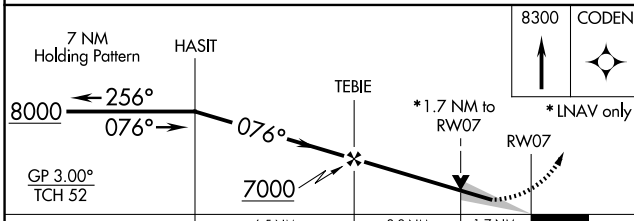
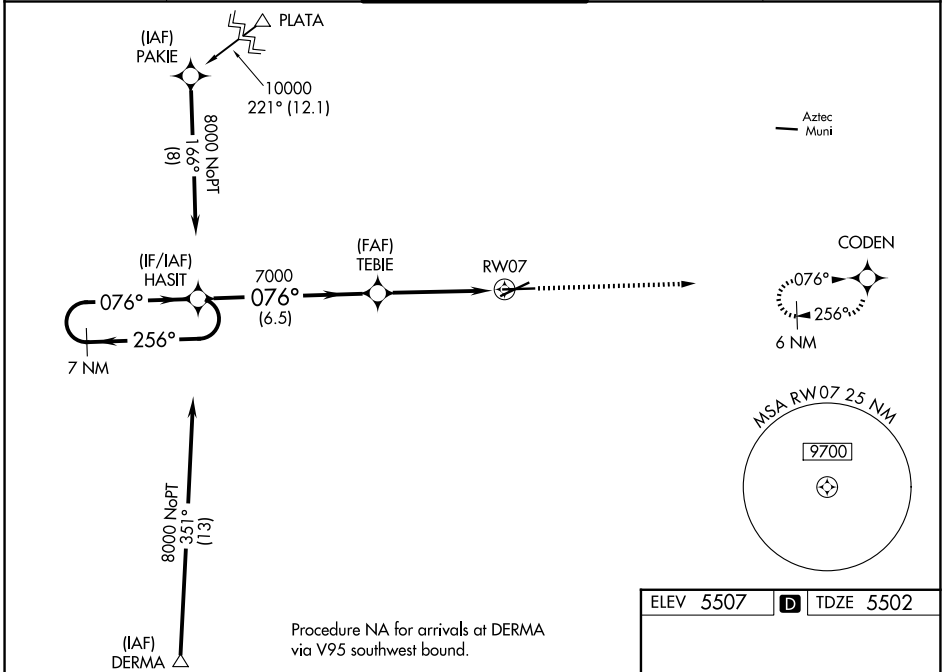
FOUR CORNERS RGNL (FMN)

RNP APCH-GPS.

⚠ Baro-VNAV and VDP NA when using Durango altimeter setting. For uncompensated Baro-VNAV systems, LNAV/VNAV NA below -25°C or above 54°C. Circling NA for Cat D southeast of Rwy 5 and south of Rwy 25. When local altimeter setting not received, use Durango altimeter setting and increase LPV DA to 6003 feet and LNAV/VNAV DA to 6223 and all visibilities $\frac{5}{8}$ SM; increase all MDAs 260 feet and visibility LNAV Cats B/C/D and Circling Cats A/B/C $\frac{7}{8}$ SM.

MISSED APPROACH:
Climb to 8300 direct
CODEN and hold.

ATIS 127.15	DENVER CENTER 118.575 348.7	FARMINGTON TOWER* 118.9 (CTAF) 0 257.8	GND CON 121.7	UNICOM 122.95
-----------------------	---------------------------------------	---	-------------------------	-------------------------



ELEV 5507	D TDZE 5502
-----------	--------------------

076°

0.5% UP

0.4% UP

6501 X 150

6704 X 100

TWR

REIL Rwy 23 and 25

MIRL Rwy 5-23 and 7-25

CATEGORY	A	B	C	D
LPV DA		5760- $\frac{3}{4}$	258 (300- $\frac{3}{4}$)	
LNAV/VNAV DA		5980-1 $\frac{3}{8}$	478 (500-1 $\frac{3}{8}$)	
LNAV MDA	6060-1	558 (600-1)	6060-1 $\frac{5}{8}$	558 (600-1 $\frac{5}{8}$)
CIRCLING	6100-1 593 (600-1)	6180-1 673 (700-1)	6380-2 $\frac{1}{2}$ 873 (900-2 $\frac{1}{2}$)	6460-3 953 (1000-3)