

VORTAC RSK <b>115.3</b> Chan <b>100</b>	APP CRS <b>252°</b>	Rwy Ldg TDZE Apt Elev <b>6248</b> <b>5507</b> <b>5507</b>
---	------------------------	--

# VOR RWY 25

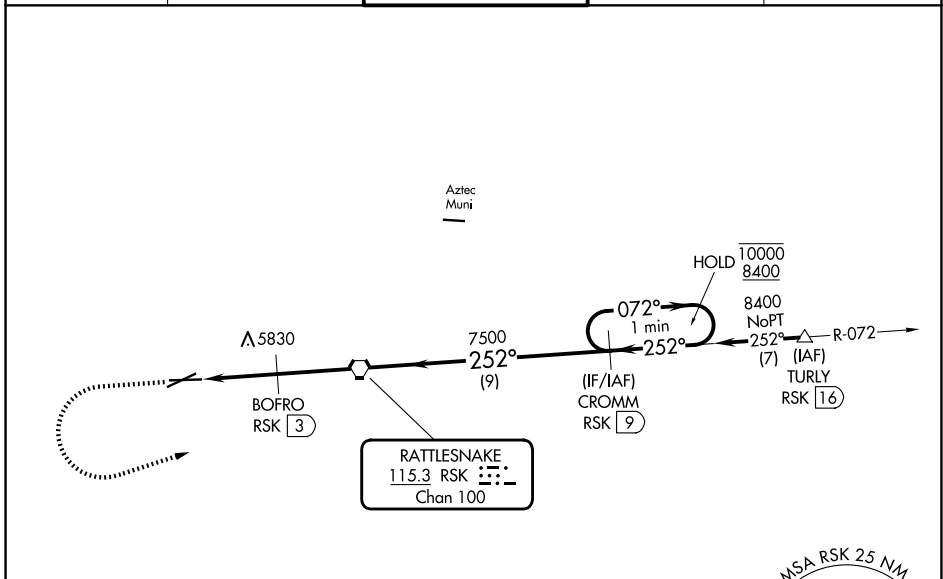
FOUR CORNERS RGNL (FMN)

DME required.

**⚠** VDP NA when using Durango-La Plata County altimeter setting. Circling NA for Cat D southeast of Rwy 5 and south of Rwy 25. When local altimeter setting not received, use Durango-La Plata County altimeter setting and increase all MDAs 260 feet; increase S-25 visibility Cat B/C/D 7/8 SM and Circling visibility Cat A/B/C 1/2 SM.

MISSED APPROACH: Climb to 7100 then climbing left turn to 8400 on heading 060° and on RSK VORTAC R-072 to CROMM/9 DME and hold.

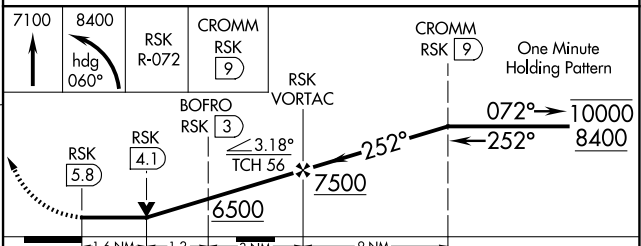
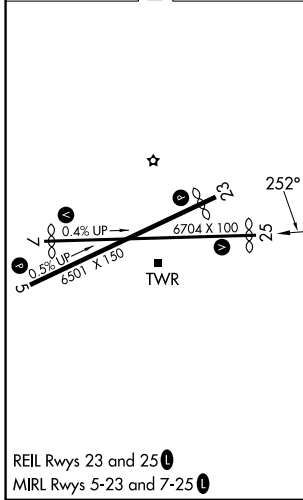
ATIS <b>127.15</b>	DENVER CENTER <b>118.575 348.7</b>	FARMINGTON TOWER★ <b>118.9 (CTAF) 0 257.8</b>	GND CON <b>121.7</b>	UNICOM <b>122.95</b>
-----------------------	---------------------------------------	--	-------------------------	-------------------------



SW-1, 16 APR 2026 to 14 MAY 2026

SW-1, 16 APR 2026 to 14 MAY 2026

ELEV 5507	<b>D</b>	TDZE 5507
-----------	----------	-----------



CATEGORY	A	B	C	D
S-25	6080-1	573 (600-1)	6080-1½	573 (600-1½)
CIRCLING	6080-1	6140-1 633 (700-1)	6380-2½ 873 (900-2½)	6460-3 953 (1000-3)

FARMINGTON, NEW MEXICO  
Orig 15JUN23

36°44'N-108°14'W

# FOUR CORNERS RGNL (FMN) VOR RWY 25