

VORTAC RSK 115.3 Chan 100	APP CRS 070°	Rwy Ldg TDZE Apt Elev 5590 5498 5507
---	------------------------	--

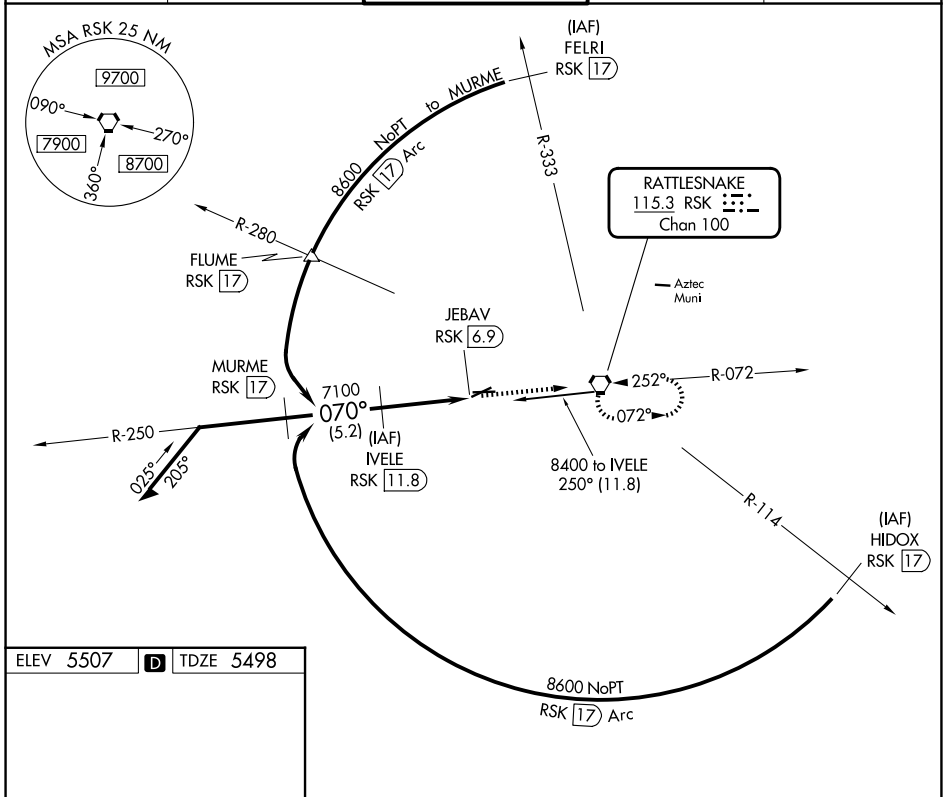
VOR/DME RWY 5

FOUR CORNERS RGNL (FMN)

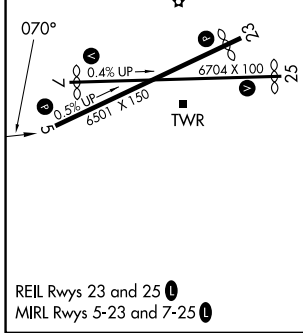
⚠ Circling NA for Cat D southeast of Rwy 5 and south of Rwy 25. VDP NA when using Durango altimeter setting. When local altimeter not received, use Durango altimeter setting and increase all MDAs 260 feet and visibility Cats B/C/D and Circling Cats A/B/C 7/5 SM.

MISSED APPROACH:
Climb to 8300 direct RSK VORTAC and hold.

ATIS 127.15	DENVER CENTER 118.575 348.7	FARMINGTON TOWER★ 118.9 (CTAF) 0257.8	GND CON 121.7	UNICOM 122.95
-----------------------	---------------------------------------	---	-------------------------	-------------------------



ELEV 5507	D	TDZE 5498
-----------	----------	-----------



VGSI and descent angles not coincident (VGSI Angle 3.00/TCH 42).

Remain within 10 NM

	A	B	C	D
S-5	6060-1	562 (600-1)	6060-1½	562 (600-1½)
CIRCLING	6100-1 593 (600-1)	6180-1 673 (700-1)	6380-2½ 873 (900-2½)	6460-3 953 (1000-3)

SW-1, 16 APR 2026 to 14 MAY 2026

SW-1, 16 APR 2026 to 14 MAY 2026