

# HI-ILS or LOC Y RWY 6

LOC I-HST <b>109.9</b>	APCH CRS <b>055°</b>	Rwy ldg <b>11,201</b>
		TDZE <b>5</b>
		Arpt Elev <b>5</b>

[USAF]

HOMESTEAD ARB (KHST)

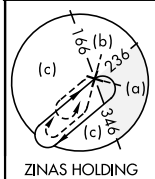
RADAR or DME required.



MISSED APPROACH: Climb to 800 then climbing right turn to 3000 intercept HST TACAN R-180 to JOMIN and hold.

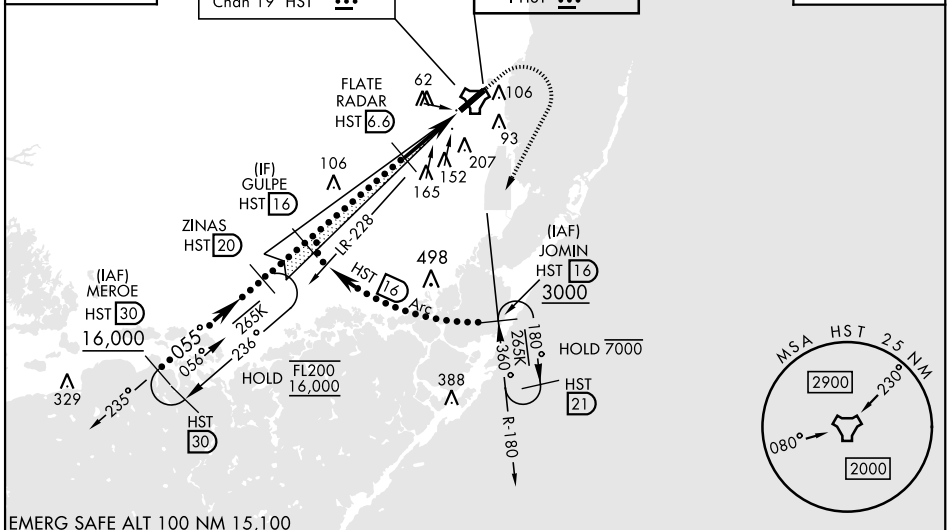
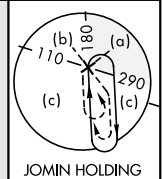
- ▼ \* When ALS inop, increase RVR to 40, vis to 3/4 mile.
- \*\* When ALS inop, increase RVR to 60, vis to 1 3/8 miles.
- \*\*\* Circling NA NW of Rwy 6-24.

ATIS * <b>132.275 269.9</b>	APP CON <b>123.8 257.675</b>	TOWER <b>133.45 279.55</b>	GND CON <b>121.75 275.8</b>
--------------------------------	---------------------------------	-------------------------------	--------------------------------



CAUTION: Heliport and stadium 2.2 NM final Rwy 6 at Homestead ARB (stadium may be lit after dark).

Missed approach requires use of RNAV or ATC RADAR monitoring.



EMERG SAFE ALT 100 NM 15,100

	800	3000	JOMIN HST 16	ELEV 5	TDZE 5
		HST R-180		HIRL Rwy 6-24	
CATEGORY	C	D	E	FAF to MAP 5.0 NM	
S-ILS 6 *	205/24	200	(200-1/2)	Knots	120 140 160 180 200
S-LOC 6 **	460/45	455	(500-7/8)	Min:Sec	2:30 2:09 1:53 1:40 1:30
CIRCLING ***	520-1 1/2 514 (600-1 1/2)	580-2 574 (600-2)	780-2 3/4 774 (800-2 3/4)		

# HI-ILS or LOC Y RWY 6

SE-3, 16 APR 2026 to 14 MAY 2026

SE-3, 16 APR 2026 to 14 MAY 2026