

HI-TACAN Y RWY 6

TACAN HST Chan 19	APCH CRS 056°	Rwy Idg 11,201 TDZE Arpt Elev 5
-----------------------------	-------------------------	---

[USAF]

HOMESTEAD ARB (KHST)

▼ * When ALS inop, increase vis to 1½ miles.
 ** Circling NA NW of Rwy 6-24.

ALSF-1

MISSED APPROACH: Climb to 800 then climbing right turn to 3000 intercept HST TACAN R-180 to JOMIN and hold.

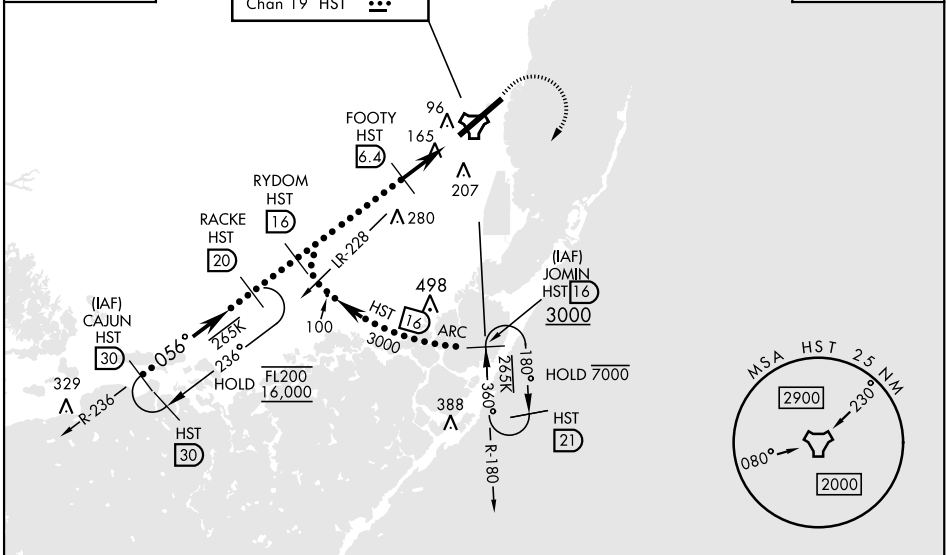
ATIS ★ 132.275 269.9	APP CON 123.8 257.675	TOWER 133.45 279.55	GND CON 121.75 275.8
--------------------------------	---------------------------------	-------------------------------	--------------------------------

RACKE HOLDING

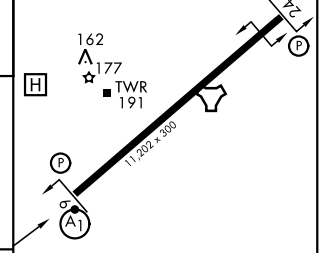
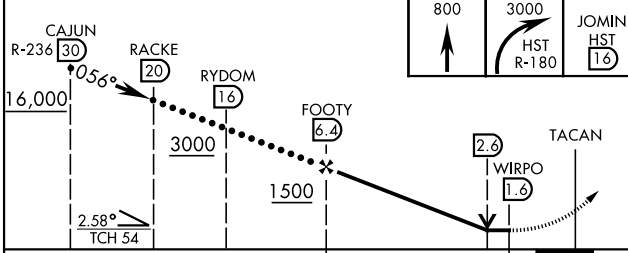
CAUTION: Heliport and stadium 2.2 NM final Rwy 6 at Homestead ARB (stadium may be lit after dark).

Missed approach requires use of RNAV or ATC RADAR monitoring.

JOMIN HOLDING



ELEV 5	TDZE 5
--------	--------



CATEGORY	C	D	E
S-6 *	460/45	455	(500-7½)
CIRCLING **	520-1½ 514 (600-1½)	580-2 574 (600-2)	780-2¾ 774 (800-2¾)

HIRL Rwy 6-24

HI-TACAN Y RWY 6

SE-3, 16 APR 2026 to 14 MAY 2026

SE-3, 16 APR 2026 to 14 MAY 2026