

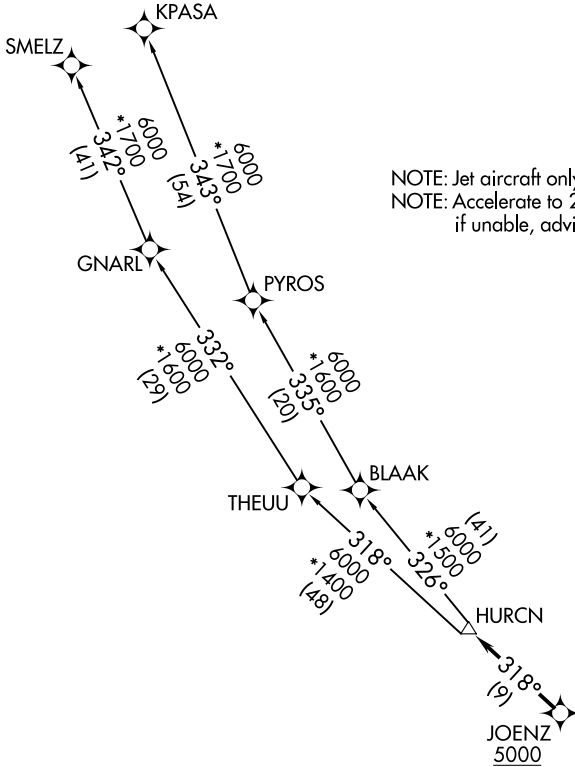
HURCN FOUR DEPARTURE (RNAV)

RNAV-1 DME/DME/IRU or GPS.

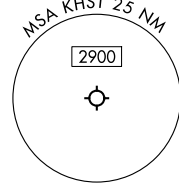
RADAR required.

**TOP ALTITUDE:
ASSIGNED BY ATC**

MIAMI DEP CON
125.5 354.1
ATIS*
132.275 269.9
CLNC DEL
121.75 275.8
GND CON
121.75 275.8
HOMESTEAD TOWER
133.45 279.55

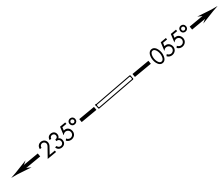


NOTE: Jet aircraft only.
NOTE: Accelerate to 250K until leaving 10000,
if unable, advise ATC.



TAKEOFF MINIMUMS

Rwy 6: Standard with minimum climb of 500'/NM to 1800.
Rwy 24: Standard with minimum climb of 500'/NM to 2200.



NOTE: Chart not to scale.

(CONTINUED ON FOLLOWING PAGE)

HURCN FOUR DEPARTURE (RNAV)



DEPARTURE ROUTE DESCRIPTION

TAKEOFF RUNWAY 6: Climb on heading 055° or as assigned by ATC for RADAR vectors to cross JOENZ at or above 5000, thence. . .

TAKEOFF RUNWAY 24: Climb on heading 235° or as assigned by ATC for RADAR vectors to cross JOENZ at or above 5000, thence. . .

. . .on track 318° to HURCN, then on transition. Maintain ATC assigned altitude. Expect clearance to filed altitude within 10 minutes after departure.

KPASA TRANSITION (HURCN4.KPASA)

SMELZ TRANSITION (HURCN4.SMELZ)

SE-3, 16 APR 2026 to 14 MAY 2026

SE-3, 16 APR 2026 to 14 MAY 2026