

TACAN RWY 24

TACAN HST Chan 19	APCH CRS 234°	Rwy ldg 11,201 TDZE 5 Arprt Elev 5
-----------------------------	-------------------------	---

[USAF]

HOMESTEAD ARB (KHST)

▼ * When ALS inop increase CAT AB RVR to 55, vis to 1 mile; CAT CDE RVR to 60, vis to 1½ miles.
 ** Circling NA NW of Rwy 6-24.

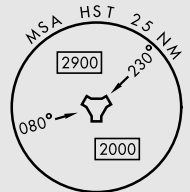
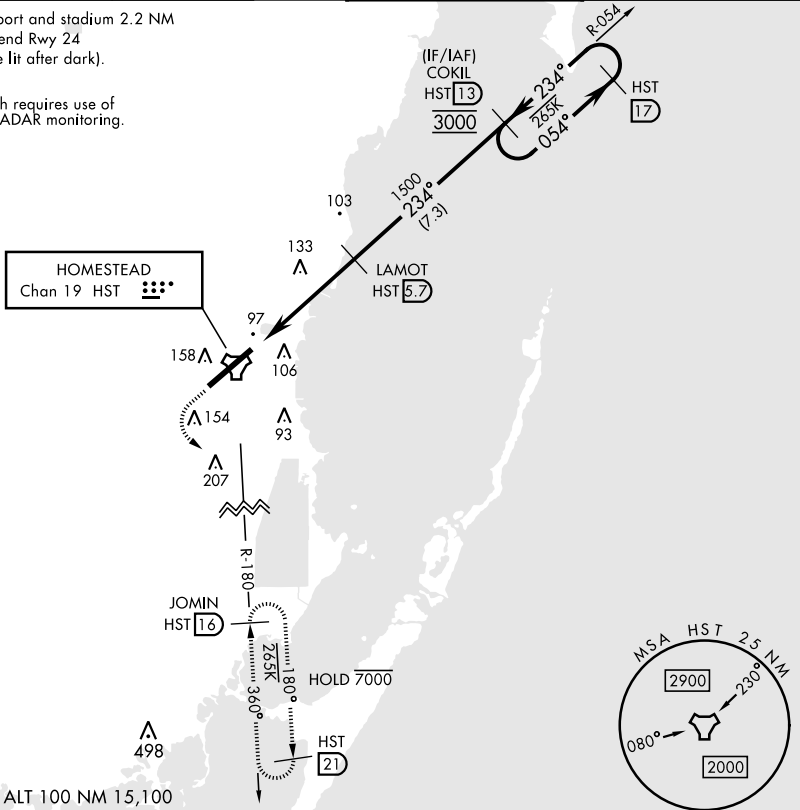


MISSED APPROACH: Climb to 800 then climbing left turn to 3000 intercept HST TACAN R-180 to JOMIN and hold.

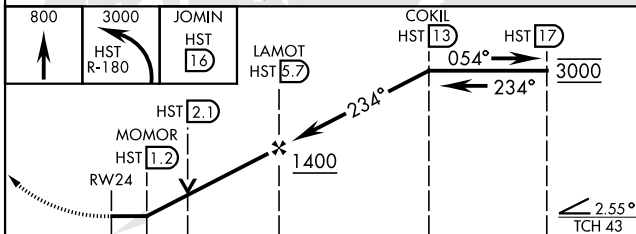
ATIS ★ 132.275 269.9	APP CON 123.8 257.675	TOWER 133.45 279.55	GND CON 121.75 275.8
--------------------------------	---------------------------------	-------------------------------	--------------------------------

CAUTION: Heliport and stadium 2.2 NM from departure end Rwy 24 (stadium may be lit after dark).

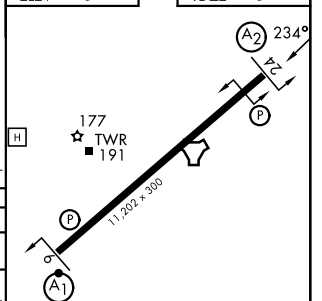
Missed approach requires use of RNAV or ATC RADAR monitoring.



EMERG SAFE ALT 100 NM 15,100



ELEV	5	TDZE	5
------	---	------	---



CATEGORY	A	B	C	D	E
S-24 *	460/40	455 (500-¾)	460/55	455 (500-1)	
CIRCLING **	460-1 454 (500-1)	500-1 494 (500-1)	520-1½ 514 (600-1½)	580-2 574 (600-2)	780-2¾ 774 (800-2¾)

HIRL Rwy 6-24

TACAN RWY 24

SE-3, 16 APR 2026 to 14 MAY 2026

SE-3, 16 APR 2026 to 14 MAY 2026