

HOMESTEAD, FLORIDA

TACAN Z RWY 6

TACAN HST Chan 19	APCH CRS 056°	Rwy ldg 11,201 TDZE Arprt Elev 5 5
-----------------------------	-------------------------	---------------------------------------------------------------------

[USAF]

HOMESTEAD ARB (KHST)

▼ * When ALS inop, increase CAT AB RVR to 55, vis to 1 mile; CAT CDE vis to 1½ miles.
 ** Circling NA NW of Rwy 6-24.

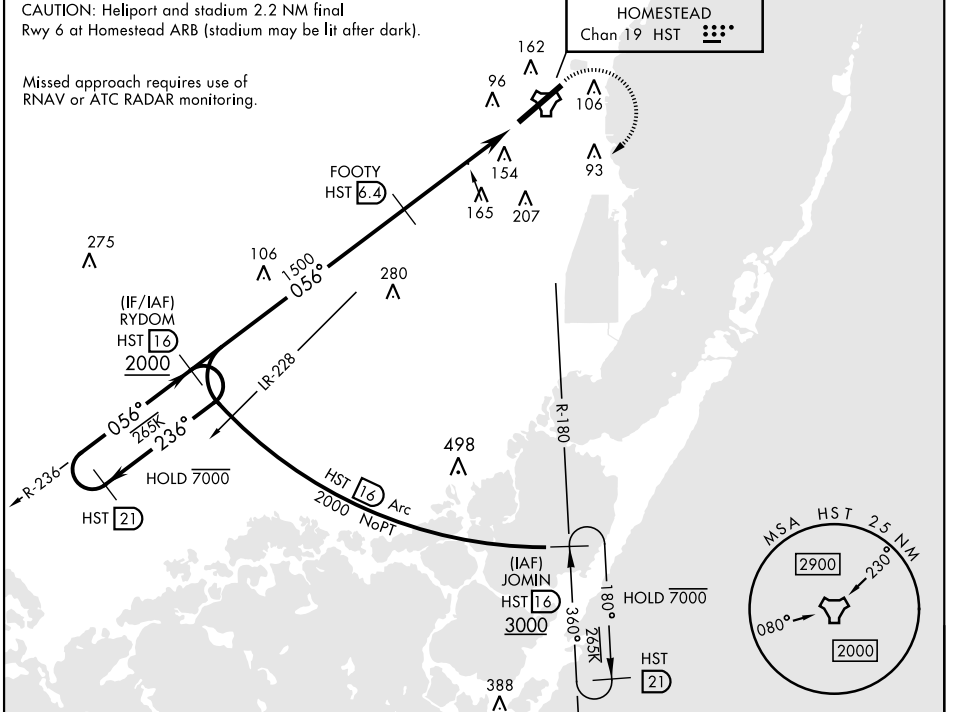
ALSF-1

MISSED APPROACH: Climb to 800 then climbing right turn to 3000 intercept HST TACAN R-180 to JOMIN and hold.

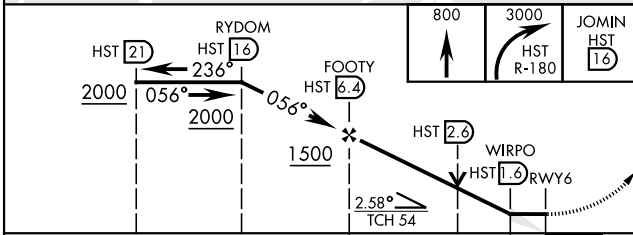
ATIS ★ 132.275 269.9	APP CON 123.8 257.675	TOWER 133.45 279.55	GND CON 121.75 275.8
--------------------------------	---------------------------------	-------------------------------	--------------------------------

CAUTION: Helipoint and stadium 2.2 NM final Rwy 6 at Homestead ARB (stadium may be lit after dark).

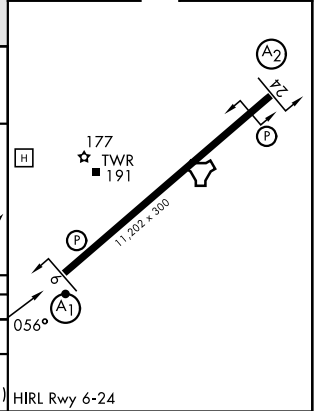
Missed approach requires use of RNAV or ATC RADAR monitoring.



EMERG SAFE ALT 100 NM 15,100



ELEV 5	TDZE 5
--------	--------



CATEGORY	A	B	C	D	E
S-6 *	460/24	455 (500-½)	460/45	455 (500-¾)	
CIRCLING**	460-1 454 (500-1)	500-1 494 (500-1)	520-1½ 514 (600-1½)	580-2 574 (600-2)	780-2¾ 774 (800-2¾)

HIRL Rwy 6-24

HOMESTEAD, FLORIDA

25°29'N-80°23'W

HOMESTEAD ARB (KHST)

Amdt 2 21APR22

TACAN Z RWY 6

SE-3, 16 APR 2026 to 14 MAY 2026

SE-3, 16 APR 2026 to 14 MAY 2026