

KNOB NOSTER, MISSOURI

# HI-ILS or LOC Z RWY 19

LOC I-MXJ <b>108.5</b>	APCH CRS <b>190°</b>	Rwy Ildg <b>12,400</b> TDZE <b>871</b> Arprt Elev <b>871</b>	[USAF]	WHITEMAN AFB (KSZL)
---------------------------	-------------------------	--	--------	---------------------

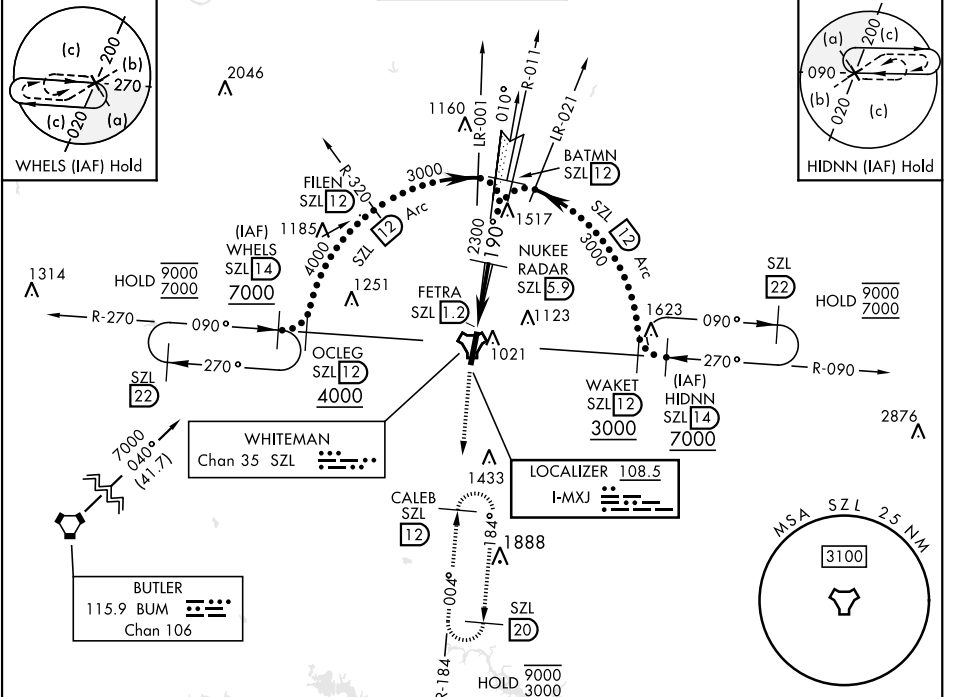
**RADAR or DME required**

A1
M
P
A1

\*When ALS inop, increase CAT CDE RVR to 40 and vis to ¾ mile.  
 \*\* When ALS inop, increase CAT CDE vis to 1½ miles.  
 \*\*\* Circling not authorized W of Rwy 1-19.

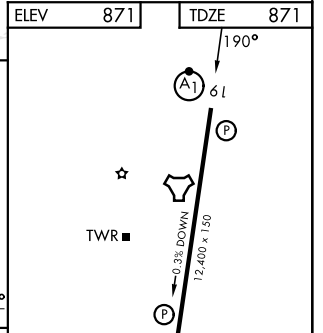
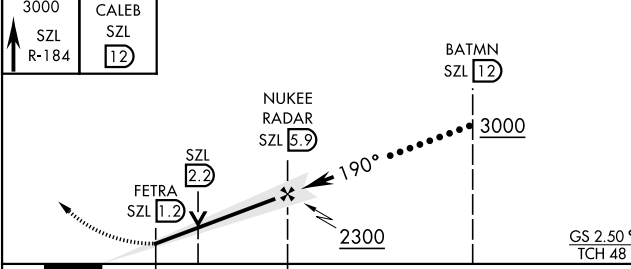
MISSED APPROACH: Climb to 3000 via SZL TACAN R-184 to CALEB and hold.

ATIS ★ <b>118.725 239.025</b>	APP CON ★ <b>127.45 284.0</b>	TOWER ★ <b>132.4 318.8</b>	GND CON ★ <b>119.125 275.8</b>	ASR
----------------------------------	----------------------------------	-------------------------------	-----------------------------------	-----



EMERG SAFE ALT 100 NM 4700

ELEV 871	TDZE 871
----------	----------



CATEGORY	C	D	E
S-ILS 19*	1071/24	200	(200-½)
S-LOC 19**	1300/40	429	(500-¾)
CIRCLING***	1340-1½ 469 (500-1½)	1440-2 569 (600-2)	1460-2 589 (600-2)

HIRL Rwy 1-19					
FAF to MAP 4.7 NM					
Knots	120	140	160	180	200
Min:Sec	2:21	2:01	1:46	1:34	1:25

KNOB NOSTER, MISSOURI 38°44'N-93°33'W WHITEMAN AFB (KSZL)

# HI-ILS or LOC Z RWY 19

NC-3, 16 APR 2026 to 14 MAY 2026

NC-3, 16 APR 2026 to 14 MAY 2026

Amtd 2 25DEC25