

NOB NOSTER, MISSOURI

# HI-TACAN Z RWY 19

TACAN SZL Chan <b>35</b>	APCH CRS <b>198°</b>	Rwy Idg <b>12,400</b> TDZE <b>871</b> Arprt Elev <b>871</b>
--------------------------	----------------------	-------------------------------------------------------------------

[USAF]

WHITEMAN AFB (KSZL)

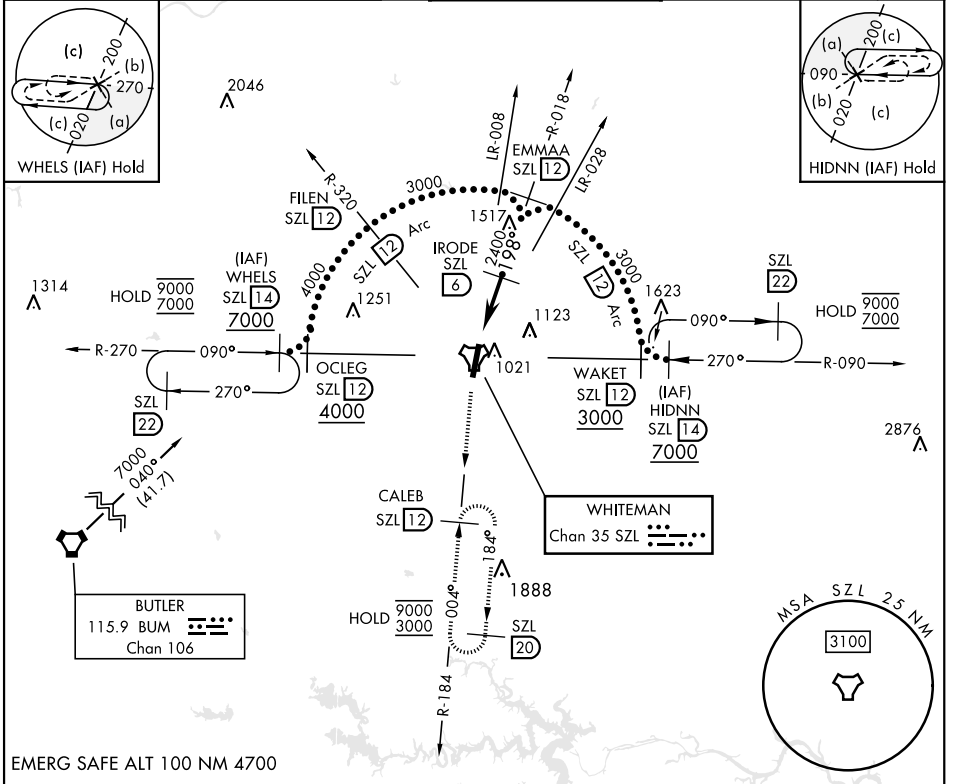
ALSF-1
 


 MISSED APPROACH: Climb to 3000 via SZL TACAN R-184 to CALEB and hold.

\* When ALS inop, increase CAT CDE vis to 1½ miles.
 


 \*\* Circling not authorized W of Rwy 1-19.

ATIS ★ <b>118.725 239.025</b>	APP CON ★ <b>127.45 284.0</b>	TOWER ★ <b>132.4 318.8</b>	GND CON ★ <b>119.125 275.8</b>	ASR
----------------------------------	----------------------------------	-------------------------------	-----------------------------------	-----



EMERG SAFE ALT 100 NM 4700

3000 SZL R-184	CALEB SZL 12	ELEV 871	TDZE 871
----------------	--------------	----------	----------

CATEGORY	C	D	E
S-19 *	1300/40	429 (500-¾)	1460-2
CIRCLING**	1340-1½ 469 (500-1½)	1440-2 569 (600-2)	1460-2 589 (600-2)

HIRL Rwy 1-19

NOB NOSTER, MISSOURI 38°44'N-93°33'W WHITEMAN AFB (KSZL)

# HI-TACAN Z RWY 19



NC-3, 16 APR 2026 to 14 MAY 2026

NC-3, 16 APR 2026 to 14 MAY 2026