

KNOB NOSTER, MISSOURI

ILS or LOC Y RWY 19

LOC I-MXJ 108.5	APCH CRS 190°	Rwy ldg 12,400 TDZE 871 Arprt Elev 871
---------------------------	-------------------------	-------------------------------------------------------------------

[USAF]

WHITEMAN AFB (KSZL)

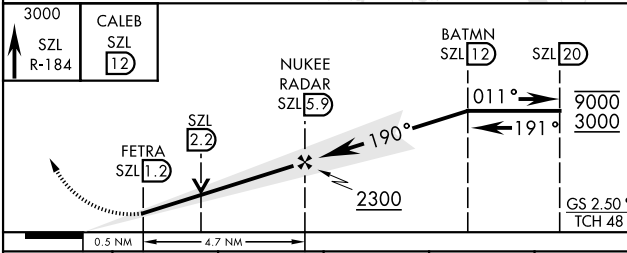
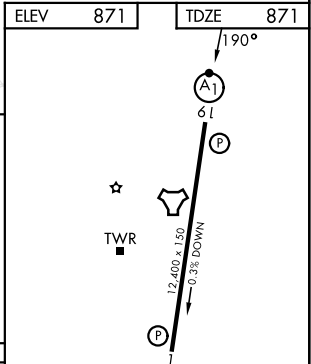
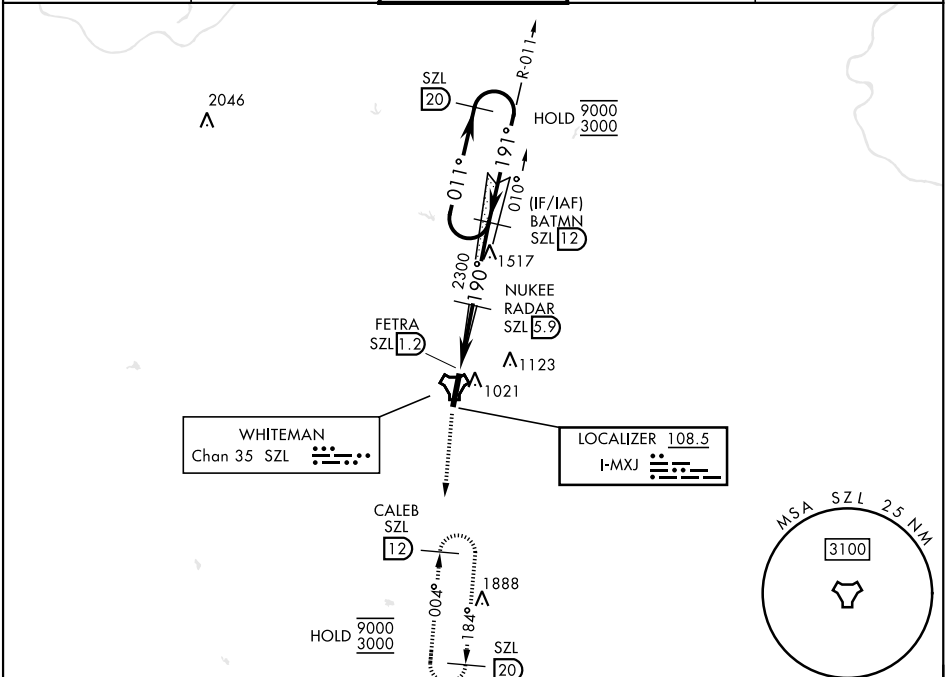
RADAR or DME required

- * When ALS inop, increase RVR to 40 and vis to ¾ mile.
- ** When ALS inop, increase CAT AB RVR to 55, vis to 1 mile.
- CAT CDE vis to 1 ¼ miles.
- *** Circling not authorized W of Rwy 1-19.



MISSED APPROACH: Climb to 3000 via SZL TACAN R-184 to CALEB and hold.

ATIS ★ 118.725 239.025	APP CON ★ 127.45 284.0	TOWER ★ 132.4 318.8	GND CON ★ 119.125 275.8	ASR
----------------------------------	----------------------------------	-------------------------------	-----------------------------------	-----



CATEGORY	A	B	C	D	E
S-ILS 19*	1071/24		200	(200-½)	
S-LOC 19**	1300/24	429 (500-½)	1300/40	429	(500-¾)
CIRCLING***	1340-1 469 (500-1)		1340-1½ 469 (500-1½)	1440-2 569 (600-2)	1460-2 589 (600-2)

HIRL Rwy 1-19	FAF to MAP 4.7 NM				
	Knots	60	90	120	150 180
	Min:Sec	4:42	3:08	2:21	1:53 1:34

KNOB NOSTER, MISSOURI
Amdt 2 25DEC25

38°44'N-93°33'W

WHITEMAN AFB (KSZL)

ILS or LOC Y RWY 19

NC-3, 16 APR 2026 to 14 MAY 2026

NC-3, 16 APR 2026 to 14 MAY 2026