

KNOB NOSTER, MISSOURI

RNAV (GPS) RWY 1

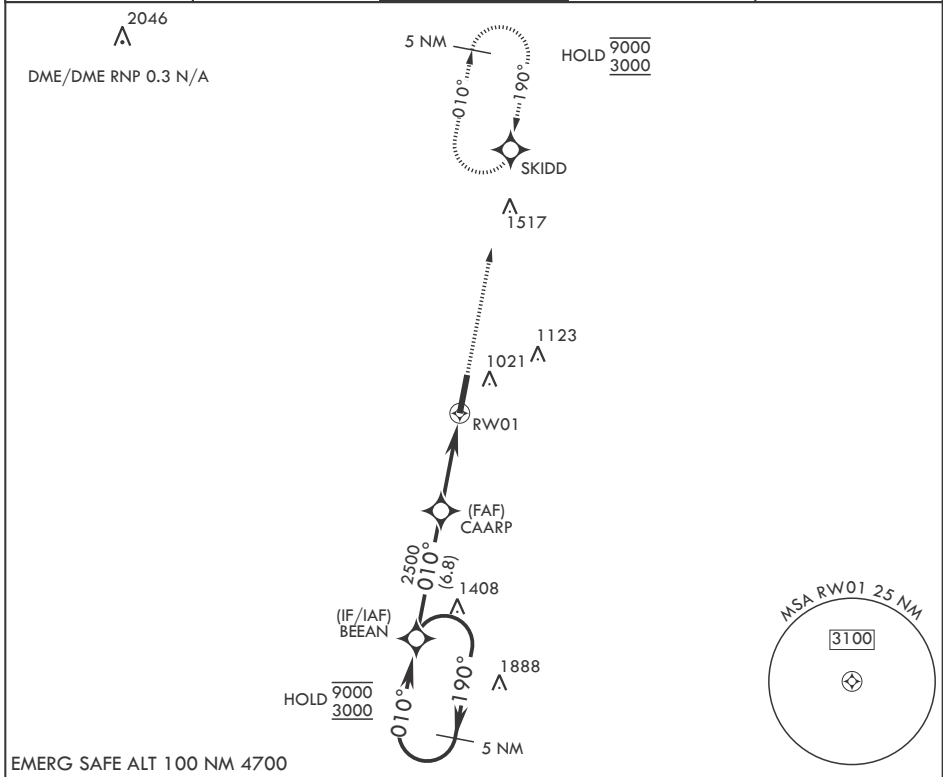
APCH CRS 010°	Rwy Idg 12,400
	TDZE 837
	Arprt Elev 871

(USAF)

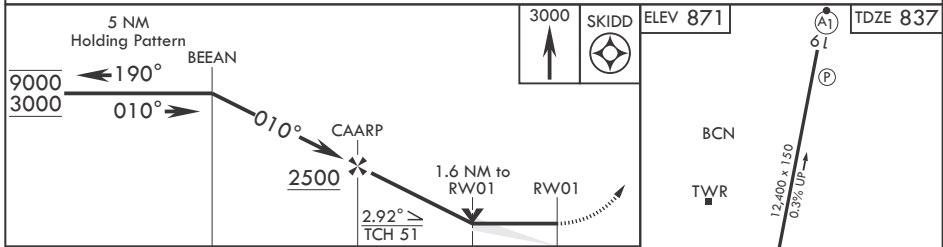
WHITEMAN AFB (KSZL)

RNP APCH-GPS	ALSF-1	MISSED APPROACH: Climb to 3000 direct SKIDD and hold.
<p>▼ * When ALS inop, increase CAT AB RVR to 55 and vis to 1 mile, CAT CDE vis to 1 1/2 miles. ** Circling not authorized W of Rwy 1-19.</p>		

ATIS* 118.725 239.025	APP CON* 127.45 284.0	TOWER* 132.4 318.8	GND CON* 119.125 275.8	ASR
--------------------------	--------------------------	-----------------------	---------------------------	-----



EMERG SAFE ALT 100 NM 4700



CATEGORY	A	B	C	D	E
RNAV MDA*	1360/24 523 (500-1/2)		1360/55 523 (500-1)		
CIRCLING**	1360-1 489 (500-1)		1360-1 1/2 489 (500-1 1/2)	1440-2 569 (600-2)	1460-2 589 (600-2)

HIRL cll rws 010°

KNOB NOSTER, MISSOURI

38°44'N - 93°33'W

WHITEMAN AFB (KSZL)

Amdt 7 25DEC25

RNAV (GPS) RWY 1

NC-3, 16 APR 2026 to 14 MAY 2026

NC-3, 16 APR 2026 to 14 MAY 2026