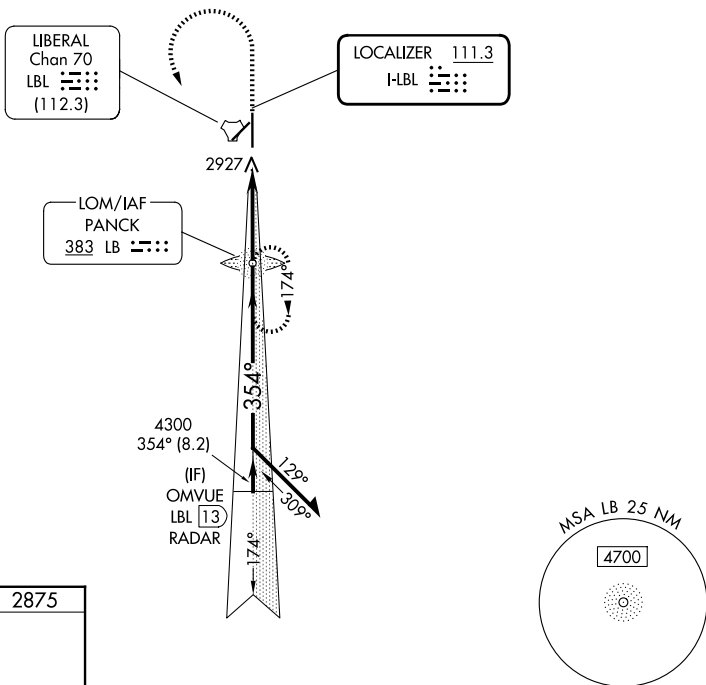


LOC I-LBL <b>111.3</b>	APP CRS <b>354°</b>	Rwy Ldg TDZE Apt Elev	<b>7105</b> <b>2875</b> <b>2886</b>
---------------------------	------------------------	-----------------------------	---

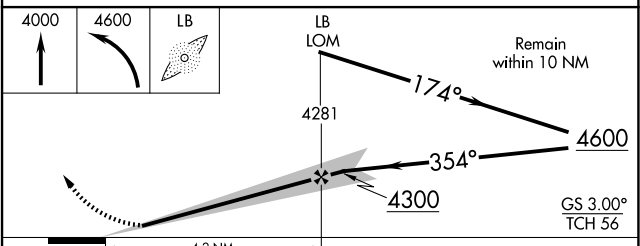
**ILS or LOC RWY 35**  
LIBERAL MID-AMERICA RGNL (L.B.L)

ADF or RADAR required.	MALS R	MISSED APPROACH: Climb to 4000 then climbing left turn to 4600 direct PANCK LOM and hold.
<p><b>⚠</b> Circling NA east of Rwy 17-35. For inop ALS, increase S-LOC 35 Cats C/D visibility to ½ SM.</p>		

AWOS-3PT <b>118.375</b>	KANSAS CITY CENTER <b>134.0 257.625</b>	UNICOM <b>122.8 (CTAF) 0</b>
----------------------------	--	---------------------------------



ELEV 2886	<b>D</b>	TDZE 2875			
REIL Rwys 4, 17 and 22					
MIRL Rwy 4-22					
HIRL Rwy 17-35					
FAF to MAP 4.2 NM					
Knots	60	90	120	150	180
Min:Sec	4:12	2:48	2:06	1:41	1:24



CATEGORY	A	B	C	D
S-ILS 35	3075-½ 200 (200-½)			
S-LOC 35	3180-½ 305 (300-½)			
CIRCLING	3280-1 394 (400-1)	3400-1 514 (600-1)	3400-1½ 514 (600-1½)	3460-2 574 (600-2)

NC-2, 16 APR 2026 to 14 MAY 2026

NC-2, 16 APR 2026 to 14 MAY 2026