

EDWARDS, CALIFORNIA

# HI-TACAN Z RWY 23L

VORTAC EDW 116.4 Chan 111	APCH CRS 226°	Rwy ldg TDZE 15,017 2286 Arprt Elev 2310
---------------------------------	------------------	--

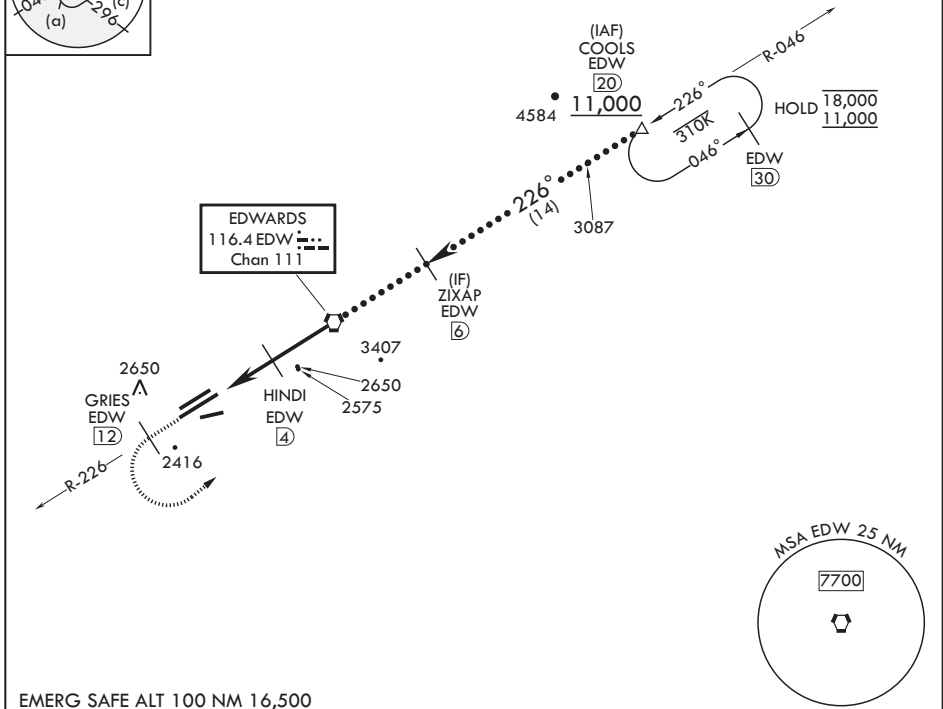
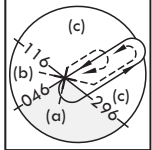
(USAF)

EDWARDS AFB (KEDW)

**⚠** \* Circling NA NW of Rwy 5L-23R. Circling not authorized at night to Rwy 5L-23R.

**MISSED APPROACH:** Climb to 11,000. Track EDW VORTAC R-226 outbound to GRIES, then turn left direct COOLS and hold. Missed Approach requires use of RNAV or ATC RADAR monitoring.

ATIS ★ 127.425 269.9	JOSHUA APP CON/DEP CON 133.65 348.7	TOWER ★ 120.7 (CTAF) 318.1 (CTAF)	GND CON 121.8 225.4
-------------------------	--	--------------------------------------	------------------------

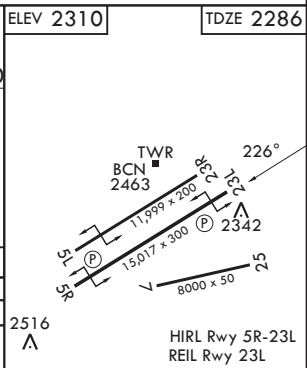


SW-3, 16 APR 2026 to 14 MAY 2026

SW-3, 16 APR 2026 to 14 MAY 2026

EMERG SAFE ALT 100 NM 16,500

11,000 EDW R-226	GRIES EDW (12)	COOLS EDW (20)	ZIXAP (6)	COOLS EDW (20)
VGSIs and descent angles not coincident (VGSi Angle 3.00/TCH 49).				
HUBNO (7)	HINDI (4)	VORTAC 4500	5900	11,000
3300		226°		
.5		3 NM		4 NM
CATEGORY	C	D	E	
S-23L	2640-1	354	(400-1)	
CIRCLING*	2880-1½ 569 (600-1½)	2880-2	569	(600-2)



EDWARDS, CALIFORNIA

34°54'N - 117°53'W

EDWARDS AFB (KEDW)

Amdt 1 30JAN20

# HI-TACAN Z RWY 23L