

EDWARDS, CALIFORNIA

ILS or LOC/DME Y RWY 23L

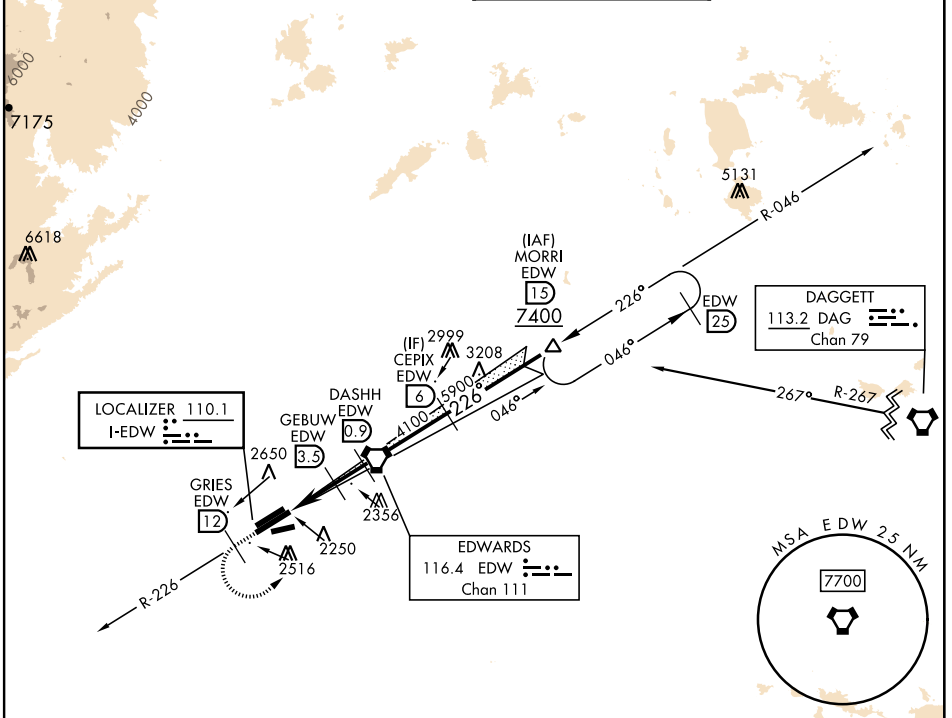
LOC I-EDW 110.1	APCH CRS 226°	Rwy ldg 15,017 TDZE 2286 Arprt Elev 2310
---------------------------	-------------------------	---

[USAF]

EDWARDS AFB (KEDW)

▼ *Circling not authorized NW of Rwy 5L-23R.
 Circling not authorized at night to Rwy 5L-23R.
 MISSED APPROACH: Climb to 7400. Track EDW R-226 outbound to GRIES, then turn left direct MORRI and hold.
 Missed approach requires use of RNAV or ATC RADAR monitoring.

ATIS ★ 127.425 269.9	JOSHUA APP CON 133.65 348.7	TOWER ★ 120.7 (CTAF) 318.1 (CTAF)	GND CON 121.8 225.4
--------------------------------	---------------------------------------	---	-------------------------------



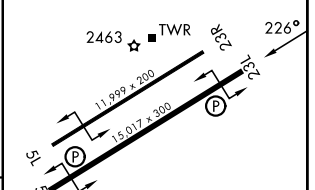
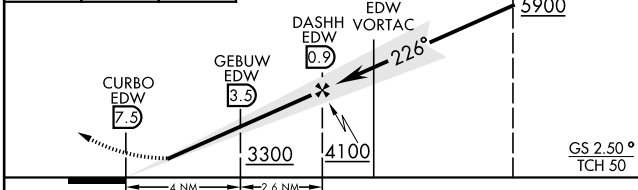
SW-3, 16 APR 2026 to 14 MAY 2026

SW-3, 16 APR 2026 to 14 MAY 2026

ELEV	2310	TDZE	2286
------	------	------	------

EMERG SAFE ALT 100 NM 16,500

7400 EDW R-226	GRIES EDW 12	VGSI and ILS glidepath not coincident (VGSI Angle 3.00/TCH 49).	CEPIX EDW 6
----------------	--------------	---	-------------



CATEGORY	A	B	C	D	E
S-ILS 23L	2486-3/4		200	(200-3/4)	
S-LOC 23L	2540-1		254	(300-1)	
CIRCLING*	2880-1	569 (600-1)	2880-1 1/2 569 (600-1 1/2)	2880-2	569 (600-2)

HIRL Rwy 5R-23L
 REIL Rwy 23L

EDWARDS, CALIFORNIA

34° 54' N - 117° 53' W

EDWARDS AFB (KEDW)

Amtd 2 23APR20

ILS or LOC/DME Y RWY 23L