

EDWARDS, CALIFORNIA

# RNAV (GPS) RWY 23L

APCH CRS <b>226°</b>	Rwy Idg TDZE Arprt Elev	<b>15,017</b> <b>2286</b> <b>2310</b>
-------------------------	-------------------------------	---

(USAF)

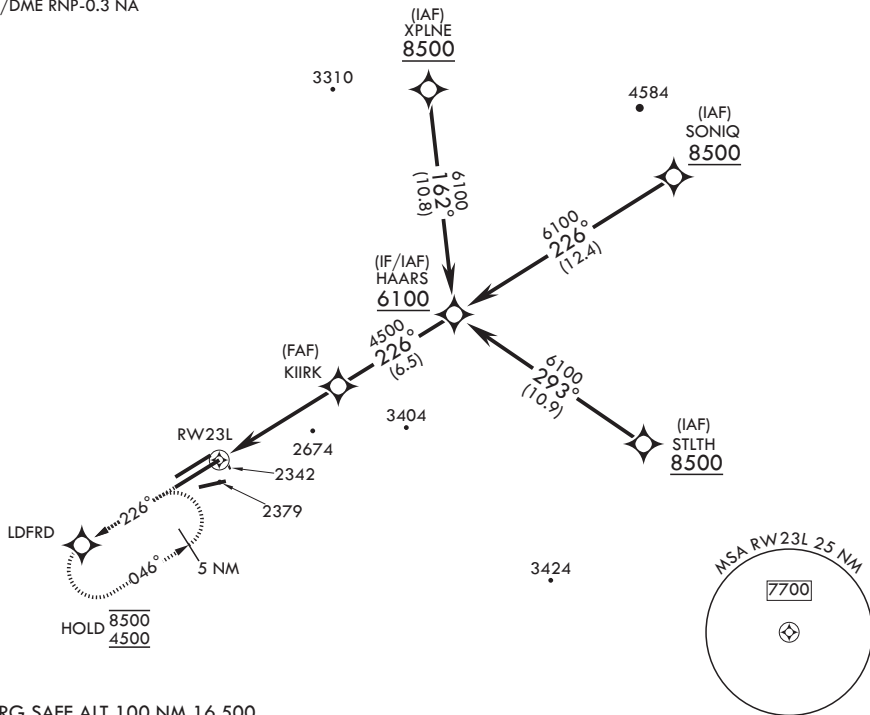
EDWARDS AFB (KEDW)

**⚠** \* Circling not authorized NW of Rwy 5L-23R.

**MISSED APPROACH:** Climb to 5700 direct LDFRD, continue climb-in-hold to 5700.

ATIS* <b>127.425 269.9</b>	JOSHUA APP CON/DEP CON <b>133.65 348.7</b>	TOWER* <b>120.7 (CTAF) 318.1 (CTAF)</b>	GND CON <b>121.8 225.4</b>
-------------------------------	---	--	-------------------------------

For uncompensated Baro-VNAV systems, Procedure NA below -19°C (-2°F) or above 54°C (130°F).  
DME/DME RNP-0.3 NA



EMERG SAFE ALT 100 NM 16,500

5700	LDFRD	HAARS	ELEV 2310	TDZE 2286	
CATEGORY	A	B	C	D	E
LNAV/VNAV DA	2620-1		334	(400-1)	
LNAV MDA	2660-1		374	(400-1)	
CIRCLING*	2880-1 569 (600-1)		2880-1½ 569 (600-1½)	2880-2 569 (600-2)	
			HIRL Rwy 5R-23L REIL Rwy 23L		

EDWARDS, CALIFORNIA

34°54'N - 117°53'W

EDWARDS AFB (KEDW)

Amdt 1 30JAN20

# RNAV (GPS) RWY 23L

SW-3, 16 APR 2026 to 14 MAY 2026

SW-3, 16 APR 2026 to 14 MAY 2026