

EDWARDS, CALIFORNIA

RNAV (GPS) RWY 5R

| | |
|-------------------------|---------------------------|
| APCH CRS 046° | Rwy Idg 15,017 |
| | TDZE 2302 |
| | Arprt Elev 2310 |

(USAF)

EDWARDS AFB (KEDW)

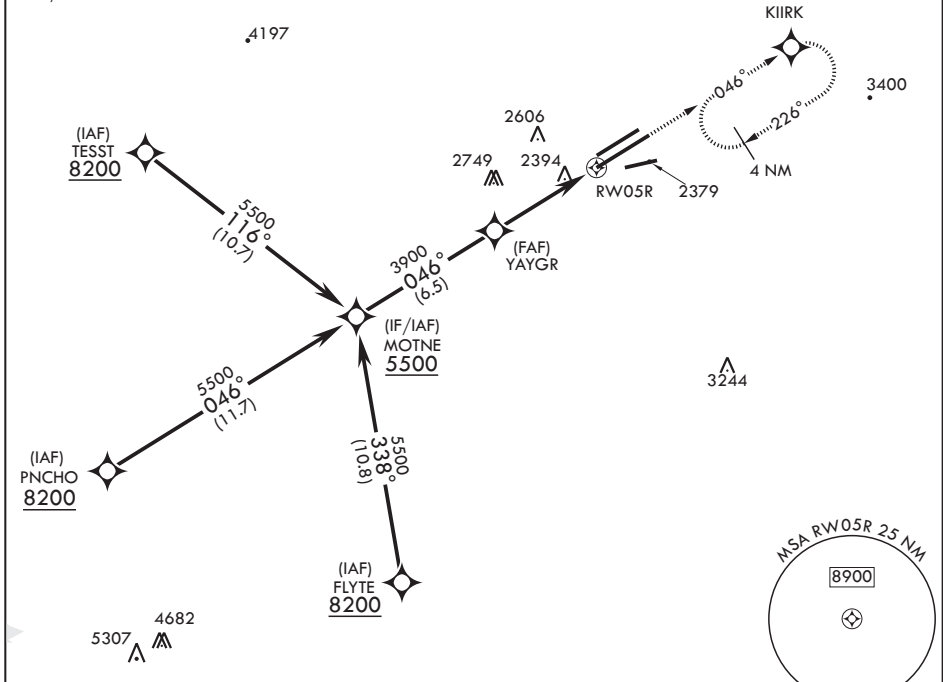
▽ * Circling not authorized NW of Rwy 5L-23R.

MISSED APPROACH: Climb to 5700 direct KIIRK and hold, continue climb-in-hold to 5700.

| | | | |
|-------------------------------|---|--|-------------------------------|
| ATIS* 127.425 269.9 | JOSHUA APP CON/DEP CON 133.65 348.7 | TOWER* 120.7 (CTAF) 318.1 (CTAF) | GND CON 121.8 225.4 |
|-------------------------------|---|--|-------------------------------|

For uncompensated Baro VNAV systems, procedure NA below -19°C (-2°F) or above 54°C (130°F).

DME/DME RNP-0.3 NA



EMERG SAFE ALT 100 NM 16,500

| | | | | | |
|--------------------|---|------------------|---|--|---|
| MOTNE 5500 | VGSI and descent angles not coincident. | 5700 KIIRK | ELEV 2310 | TDZE 2302 | |
| GP 3.00° TCH 50 | 046° | 2680 ▲ | | | |
| | YAYGR 3900 | 1.5 NM to RWY 5R | | | |
| | | 4.8 NM | | | |
| CATEGORY | A | B | C | D | E |
| LNAV/VNAV DA | 2820-1 ³ / ₈ | | 517 | (600-1 ³ / ₈) | |
| LNAV MDA | 2820-1 | 517 (600-1) | 2820-1 ³ / ₈ | 517 (600-1 ³ / ₈) | |
| CIRCLING* | 2880-1 569 (600-1) | | 2880-1 ¹ / ₂ 569 (600-1 ¹ / ₂) | 2880-2 569 (600-2) | |

EDWARDS, CALIFORNIA
Amdt 1 30JAN20

34°54'N - 117°53'W

EDWARDS AFB (KEDW)

RNAV (GPS) RWY 5R

SW-3, 16 APR 2026 to 14 MAY 2026

SW-3, 16 APR 2026 to 14 MAY 2026