

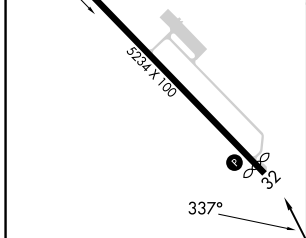
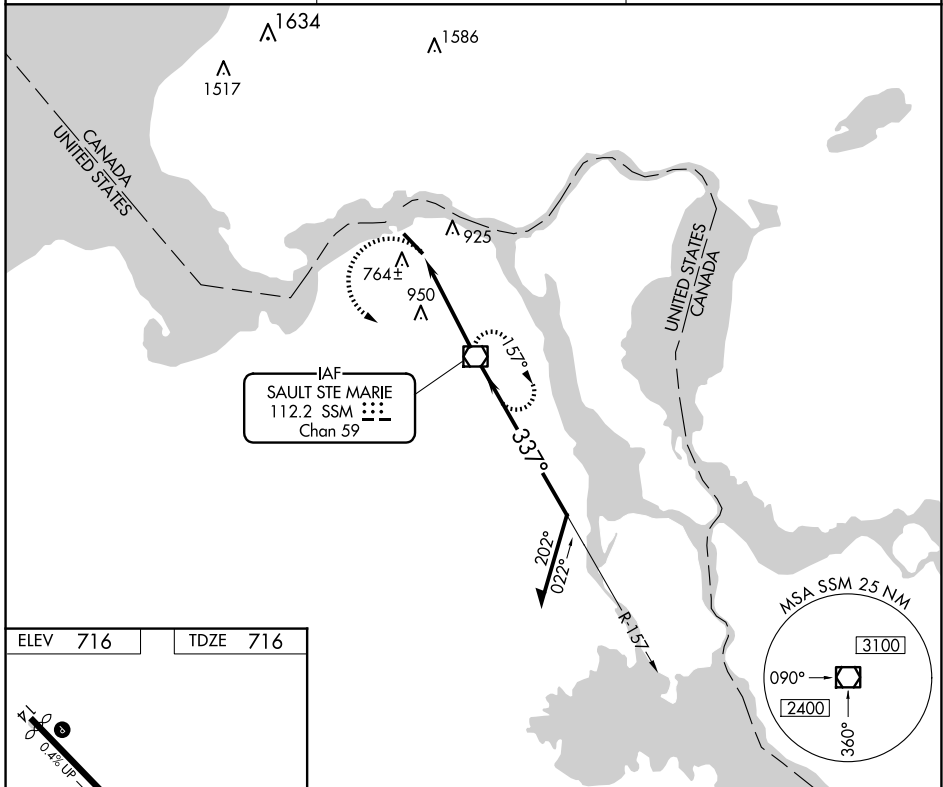
VOR/DME SSM	APP CRS	Rwy Idg TDZE	5056
112.2	337°	Apt Elev	716
Chan 59			

VOR RWY 32

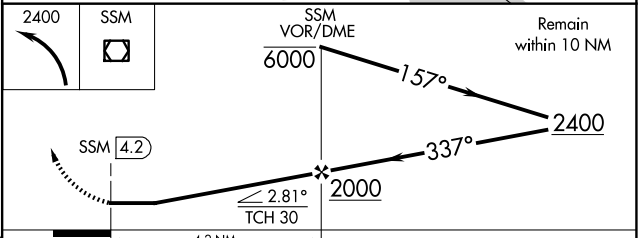
SAULT STE MARIE MUNI/SANDERSON FLD (A.NJ)

	When local altimeter setting not received, use Chippewa County Intl altimeter setting and increase all MDA 60 feet and increase S-32 Cat C visibility to 1 1/4 mile. Rwy 32 helicopter visibility reduction below 3/4 SM NA.	MISSED APPROACH: Climbing left turn to 2400 direct SSM VOR/DME and hold.
--	--	--

ASOS 118,375	TORONTO CENTER 132.65 344.5	UNICOM 122.7 (CTAF) 0
------------------------	---------------------------------------	---------------------------------



ELEV	716	TDZE	716
MIRL Rwy 14-32			
REIL Rwys 14 and 32			
FAF to MAP 4.2 NM			
Knots	60	90	120 150 180
Min:Sec	4:12	2:48	2:06 1:41 1:24



CATEGORY	A	B	C	D
S-32	1260-1 544 (600-1)		1260-1 5/8 544 (600-1 5/8)	NA
CIRCLING	1280-1 564 (600-1)		1320-1 3/4 604 (700-1 3/4)	NA

VOR RWY 32

EC-1, 16 APR 2026 to 14 MAY 2026

EC-1, 16 APR 2026 to 14 MAY 2026