

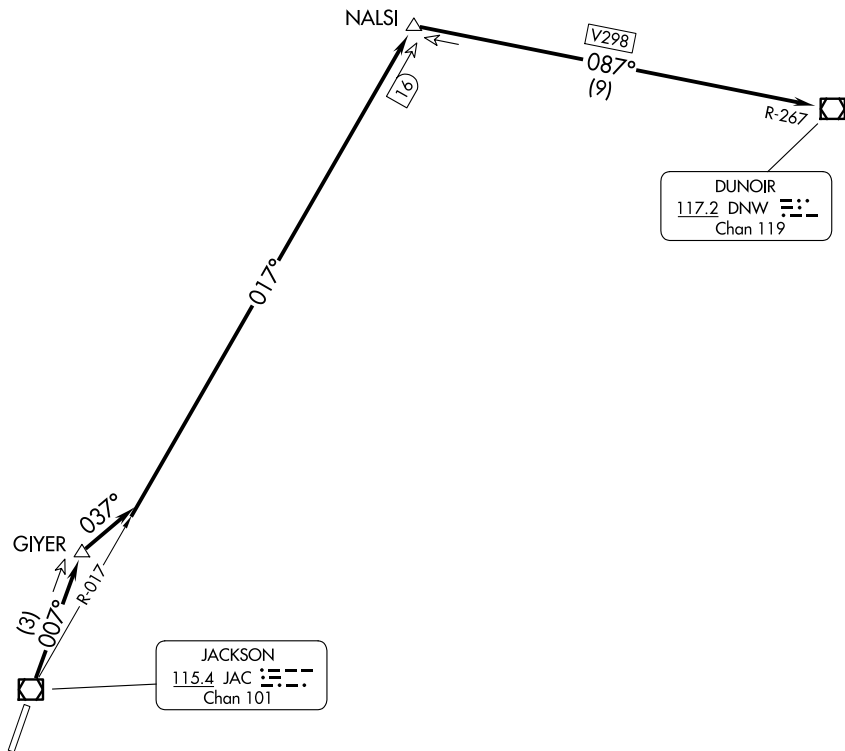
(GEYSR6.DNW) 23334

GEYSER SIX DEPARTURE (OBSTACLE)

AL-504 (FAA)

JACKSON HOLE (JAC)
JACKSON, WYOMING

SALT LAKE CENTER
133.25 285.6
CTAF
118.075
UNICOM
122.95



NOTE: DME required.

TAKEOFF MINIMUMS

Rwy 1: Standard with minimum climb of 234' per NM to 12400.

Rwy 19: NA - ATC.

NOTE: Chart not to scale.

DEPARTURE ROUTE DESCRIPTION

TAKEOFF RUNWAY 1: Climb to 12400 on JAC R-007 to GIYER/JAC 3 DME, and right turn heading 037° to intercept JAC R-017 to NALS1 INT/JAC 16 DME then right turn to intercept DNW R-267 to DNW VOR/DME.

NW-1, 16 APR 2026 to 14 MAY 2026

NW-1, 16 APR 2026 to 14 MAY 2026

GEYSER SIX DEPARTURE (OBSTACLE)
(GEYSR6.DNW) 02DEC21

JACKSON, WYOMING
JACKSON HOLE (JAC)