

| | | |
|--|------------------------|--|
| LOC/DME I-JAC 109.1 Chan 28 | APP CRS 187° | Rwy Ldg TDZE Apt Elev 6300 6451 6451 |
|--|------------------------|--|

ILS Z or LOC Z RWY 19

JACKSON HOLE (JAC)

DME required for LOC only. RNAV 1-GPS required. RADAR required for procedure entry at MOSSS.

▼ Circling NA for Cats A, B, and C east of Rwy 1-19. Inop table does not apply to S-ILS 19*. Circling NA for Cat D. For inop ALS increase S-LOC 19# Cats C and D visibility to RVR 4500.

▲ -21°C

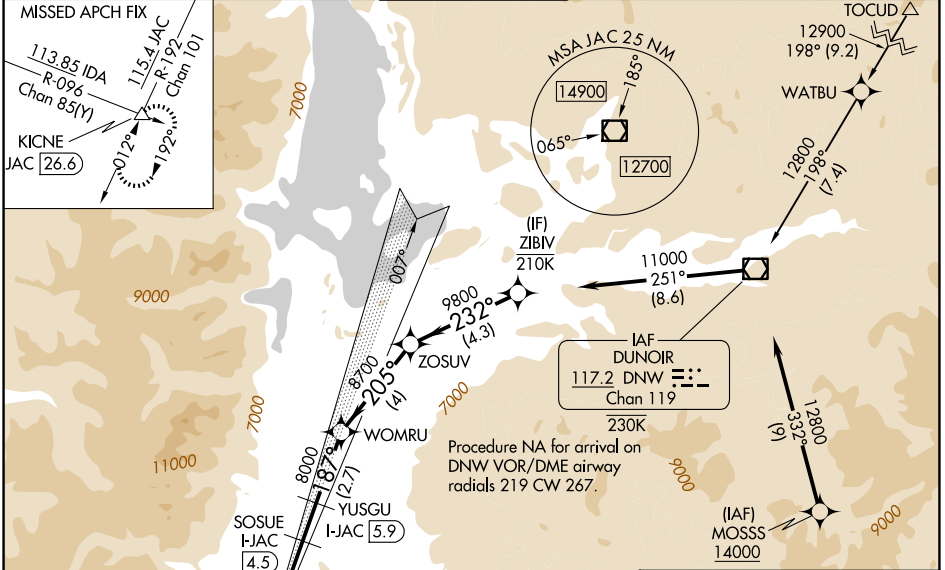
MALS

MISSED APPROACH: Climb to 6900 then climbing right turn to 14000 on JAC VOR/DME R-192 to KICNE INT/JAC 26.6 DME and hold, continue climb-in-hold to 14000.

*Missed approach requires minimum climb of 225 feet per NM to 9400; if unable to meet gradient, see ILS Y or LOC Y RWY 19.

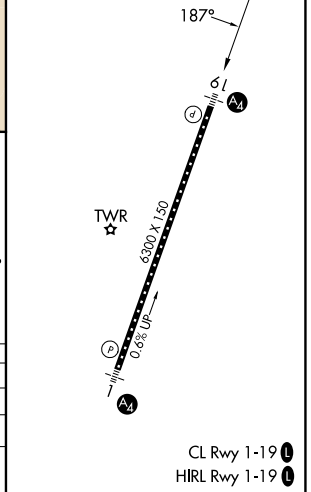
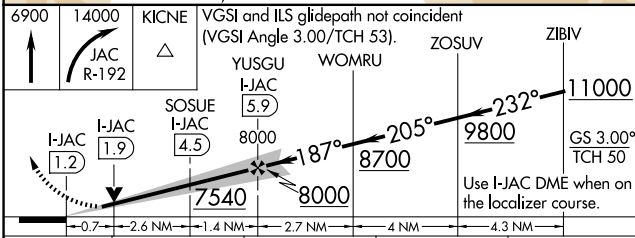
#Missed approach requires minimum climb of 234 feet per NM to 9600; if unable to meet gradient, see ILS Y or LOC Y RWY 19.

| | | | | |
|--------------------------|---|---|--------------------------|-------------------------|
| D-ATIS 120.625 | SALT LAKE CENTER 133.25 285.6 | JACKSON TOWER* 118.075 (CTAF) 📶 | GND CON 124.55 | UNICOM 122.95 |
|--------------------------|---|---|--------------------------|-------------------------|



| | |
|----------------------------------|--|
| JACKSON 115.4 JAC Chan 101 | LOCALIZER 109.1 I-JAC Chan 28 |
|----------------------------------|--|

| | | |
|-----------|----------|-----------|
| ELEV 6451 | D | TDZE 6451 |
|-----------|----------|-----------|



| | | | | |
|-----------|-----------------------|-----------------------|------------------------|----|
| CATEGORY | A | B | C | D |
| S-ILS 19* | | 6651/40 | 200 (200-¾) | |
| S-LOC 19# | | 6720/40 | 269 (300-¾) | |
| CIRCLING | 6840-1 389 (400-1) | 6960-1 509 (600-1) | 7440-3 989 (1000-3) | NA |

NW-1, 16 APR 2026 to 14 MAY 2026

NW-1, 16 APR 2026 to 14 MAY 2026