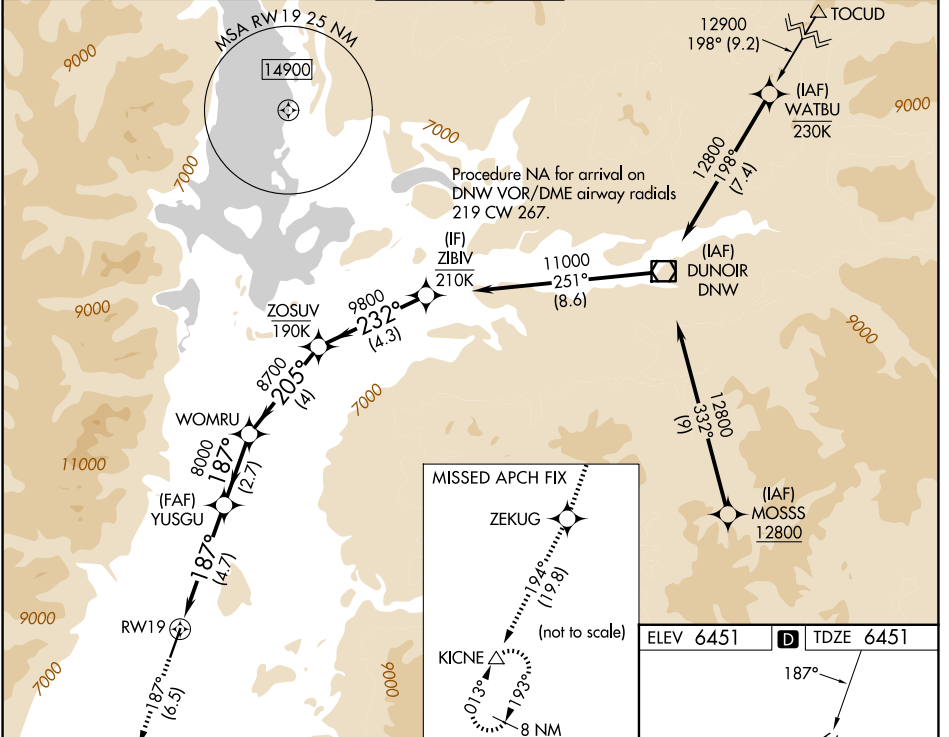


APP CRS	Rwy Ldg	6300
187°	TDZE	6451
	Apt Elev	6451

RNAV (RNP) Y RWY 19

JACKSON HOLE (JAC)

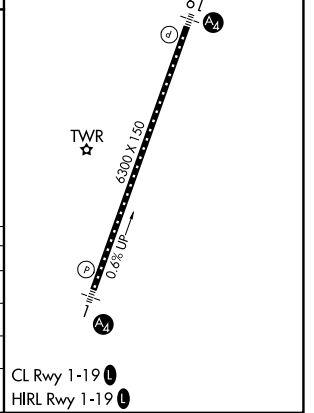
RNP AR APCH-GPS.		MALS 	MISSED APPROACH: Climb to 14000 on track 187° to ZEKUG and on track 194° to KICNE and hold, continue climb-in-hold to 14000. *Missed approach requires minimum climb of 226 feet per NM to 11400. #Missed approach requires minimum climb of 210 feet per NM to 11600.		
For uncompensated Baro-VNAV systems, procedure NA below -27°C or above 54°C. For inop ALS, increase RNP 0.30 all Cats visibility to 1¼ SM.			#Missed approach requires minimum climb of 210 feet per NM to 11600.		
D-ATIS	SALT LAKE CENTER	JACKSON TOWER*	GND CON	UNICOM	
120.625	133.25 285.6	118.075 (CTAF) 1	124.55	122.95	



NW-1, 16 APR 2026 to 14 MAY 2026

NW-1, 16 APR 2026 to 14 MAY 2026

14000	ZEKUG	KICNE	WOMRU		ZOSUV	ZIBIV
↑ tr 187°		tr 194°				
			YUSGU			
			RW19			
			8000		8700	11000
			187°		205°	232°
			8000		9800	
			4.7 NM		2.7 NM	4.3 NM
CATEGORY	A	B	C	D		
RNP 0.11 DA*	6781/40		330 (400-¾)			
RNP 0.30 DA#	6935/60		484 (500-1¼)			
RNP 0.30 DA	7038-1⅓		587 (600-1½)			



AUTHORIZATION REQUIRED