

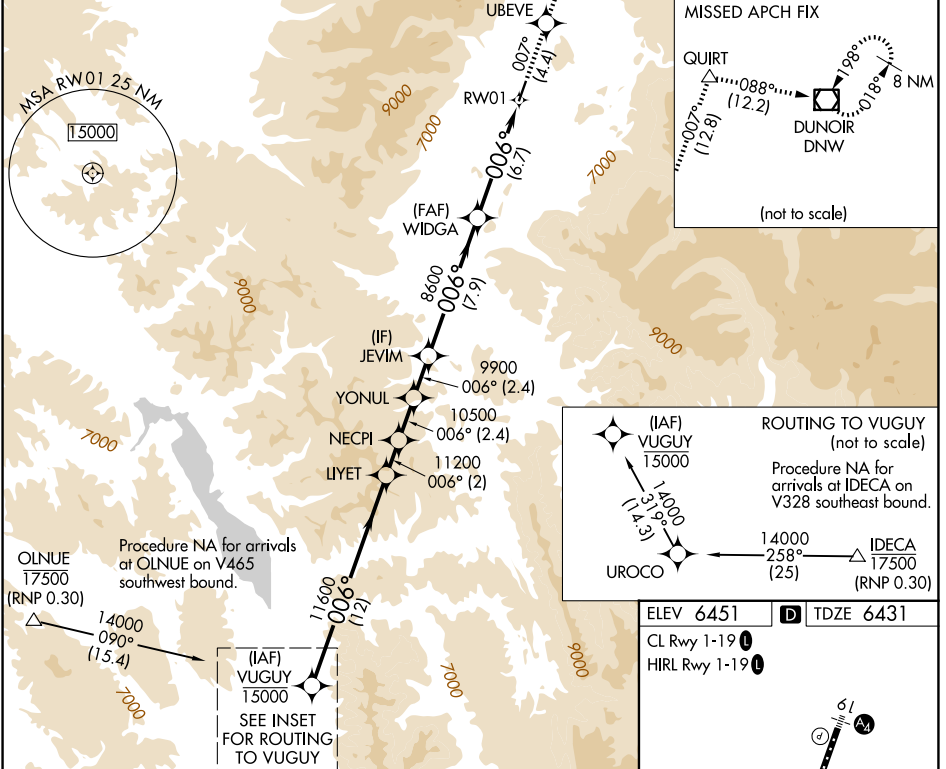
APP CRS	Rwy Ldg	<b>6300</b>
<b>006°</b>	TDZE	<b>6431</b>
	Apt Elev	<b>6451</b>

# RNAV (RNP) Z RWY 1

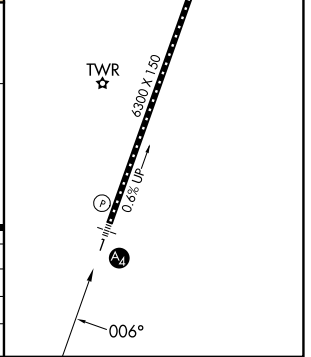
## JACKSON HOLE (JAC)

<b>RNP AR APCH</b> For uncompensated Baro-VNAV systems, procedure NA below -27°C or above 54°C. Inop table does not apply to RNP 0.11* all Cats visibility. For inop ALS, increase RNP 0.30* all Cats visibility to ¾ SM. Missed approach requires RNP less than 1.0.		<b>MALS</b> 	<b>MISSED APPROACH:</b> Climb to 14000 on track 007° to UBEVE and track 007° to QUIRT and track 088° to DNW VOR/DME and hold, continue climb-in-hold to 14000. * Missed approach requires minimum climb of 330 feet per NM to 8200; if unable to meet climb gradient, see RNAV (RNP) Y RWY 1.
---	--	-----------------	--

D-ATIS <b>120.625</b>	SALT LAKE CENTER <b>133.25 285.6</b>	<b>JACKSON TOWER*</b> <b>118.075</b> (CTAF)	GND CON <b>124.55</b>	UNICOM <b>122.95</b>
--------------------------	---	--	--------------------------	-------------------------



VUGUY	LIYET	NECP1	UBEVE	QUIRT	DNW
15000	11200	10500	9900	8600	8600
14000	11600	10500	9900	8600	8600
GP 3.00°					
TCH 50					
	12 NM	2 NM	2.4	2.4	7.9 NM
					6.7 NM
CATEGORY	A	B	C	D	
RNP 0.11 DA*		6690-¾	259 (300-¾)		
RNP 0.30 DA*		6743-¾	312 (300-¾)		



**AUTHORIZATION REQUIRED**

NW-1, 16 APR 2026 to 14 MAY 2026

NW-1, 16 APR 2026 to 14 MAY 2026