

WAAS CH 58299 W01A	APP CRS 006°	Rwy Ldg 6300 TDZE 6431 Apt Elev 6451
--	------------------------	---

RNAV (GPS) X RWY 1

JACKSON HOLE (JAC)

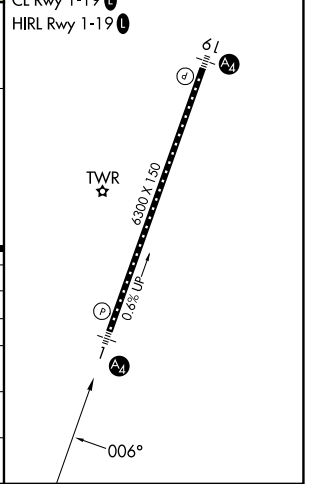
RNP APCH-GPS.	MALS =	MISSED APPROACH: Climb to 14000 direct QUIRT and on track 088° to DNW VOR/DME and hold, continue climb-in-hold to 14000. *Missed approach requires minimum climb of 385 feet per NM to 7700.
<p>▼ Circling NA east of Rwy 1-19. Baro-VNAV NA.</p> <p>▲ Circling NA for Cat D. Inop table does not apply to LPV, LPV*, LNAV/VNAV, and LNAV Cat C/D.</p> <p>☁ -21°C</p>	<p>④</p>	

D-ATIS 120.625	SALT LAKE CENTER 133.25 285.6	JACKSON TOWER* 118.075 (CTAF) ①	GND CON 124.55	UNICOM 122.95
--------------------------	---	---	--------------------------	-------------------------



ELEV 6451	①	TDZE 6431
-----------	---	-----------

	HOMVA 7 NM Holding Pattern	VALCU	DECEV	ZUGEN	COVGI 5.4 NM to RW01	QUIRT	Ir 088°	DNW
	17500 ← 186° 11700 → 006°	11000	10400	9500	8180	14000		
	GP 3.00° TCH 50							
		←4.3 NM	←3.7 NM	←5.5 NM	←4.1 NM	←2.1 NM	←3.4	
CATEGORY	A	B	C	D				
LPV DA*		6651/40	220 (200-¾)					
LPV DA		7445-4	1014 (1000-4)					
LNAV/VNAV DA		7327-4	896 (900-4)					
LNAV MDA	7540/55 1109 (1100-1)	7540-1½ 1109 (1100-1½)	7540-3 1109 (1100-3)					
CIRCLING	7540-1½ 1089 (1100-1½)	7540-1½ 1089 (1100-1½)	7560-3 1109 (1200-3)					NA



NW-1, 16 APR 2026 to 14 MAY 2026

NW-1, 16 APR 2026 to 14 MAY 2026