

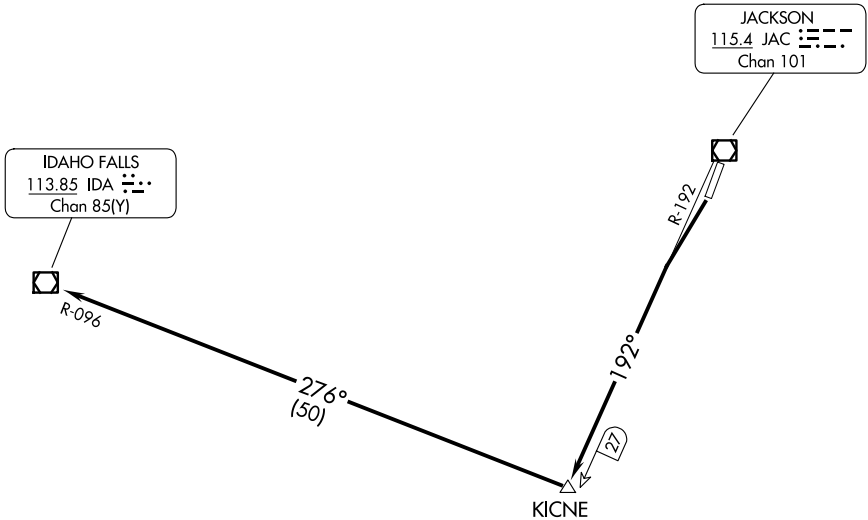
(TETON3.KICNE) 24305

# TETON THREE DEPARTURE (OBSTACLE)

AL-504 (FAA)

JACKSON HOLE (JAC)  
JACKSON, WYOMING

SALT LAKE CENTER  
133.25 285.6  
CTAF  
118.075



NW-1, 16 APR 2026 to 14 MAY 2026

NW-1, 16 APR 2026 to 14 MAY 2026

### TAKEOFF MINIMUMS

Rwy 19: Standard with a minimum climb of 335' per NM to 14000 or 4400-3 for climb in visual conditions.  
Rwy 1: Not authorized - ATC.

### TAKEOFF OBSTACLE NOTES

Rwy 19: Bush 485' from DER, 513' right of centerline, 6428' MSL.

NOTE: Chart not to scale.

### DEPARTURE ROUTE DESCRIPTION

**TAKEOFF RUNWAY 19:** Climb to 14000 via JAC R-192 to KICNE INT/JAC 27 DME, then right turn via IDA R-096 to IDA VOR/DME; or for climb in visual conditions: cross JAC VOR/DME southbound at or above 10800, then climb to 14000 via JAC R-192 to KICNE INT/JAC 27 DME, then right turn via IDA R-096 to IDA VOR/DME.

# TETON THREE DEPARTURE (OBSTACLE)

(TETON3.KICNE) 05JUN08

JACKSON, WYOMING  
JACKSON HOLE (JAC)