

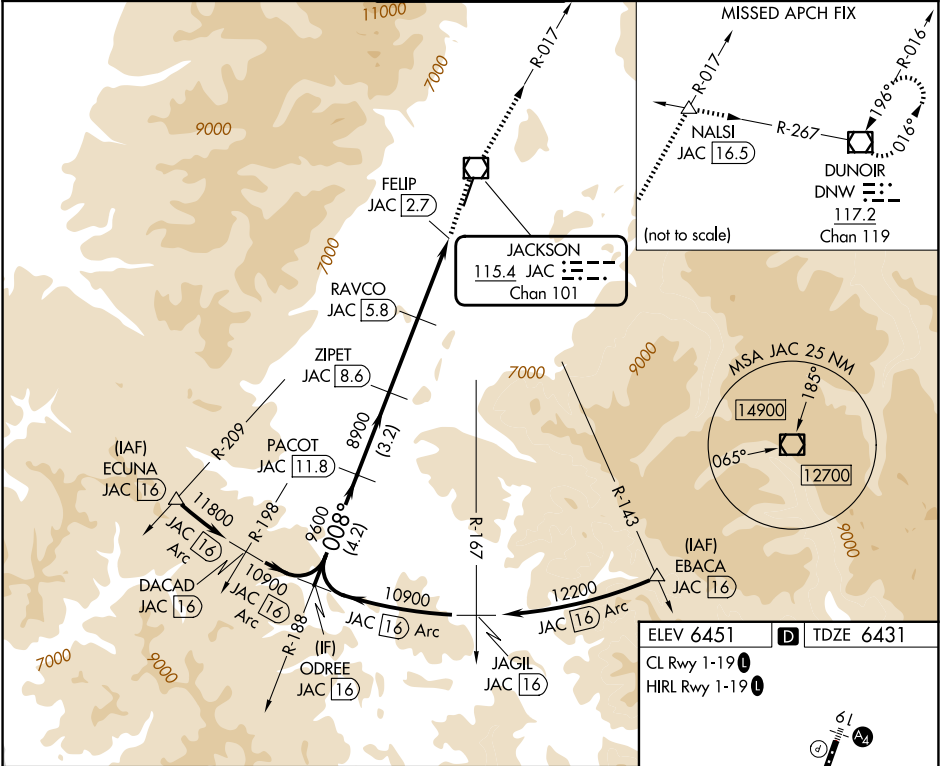
VOR/DME JAC	APP CRS	Rwy Ldg	6300
<b>115.4</b>	<b>008°</b>	TDZE	<b>6431</b>
Chan <b>101</b>		Apt Elev	<b>6451</b>

# VOR RWY 1

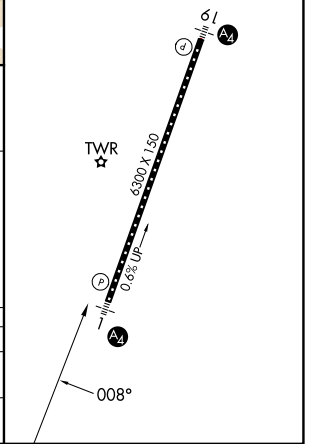
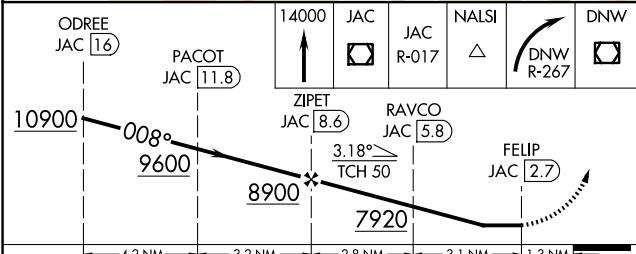
## JACKSON HOLE (JAC)

DME required.	MALS	MISSED APPROACH: Climb to 14000 direct JAC VOR/DME and on JAC R-017 to NALSI INT/JAC 16.5 DME and right turn on DNW R-267 to DNW VOR/DME and hold, continue climb-in-hold to 14000.

D-ATIS <b>120.625</b>	SALT LAKE CENTER <b>133.25 285.6</b>	JACKSON TOWER* <b>118.075 (CTAF)</b>	GND CON <b>124.55</b>	UNICOM <b>122.95</b>
--------------------------	---	---	--------------------------	-------------------------



ELEV 6451	<b>D</b>	TDZE 6431
CL Rwy 1-19	<b>1</b>	
HIRL Rwy 1-19	<b>1</b>	



CATEGORY	A	B	C	D
S-1	7800/55 1369 (1400-1)	7800-1¼ 1369 (1400-1¼)	7800-3 1369 (1400-3)	
CIRCLING	7800-1¼ 1349 (1400-1¼)	7800-1½ 1349 (1400-1½)	7800-3 1349 (1400-3)	NA

NW-1, 16 APR 2026 to 14 MAY 2026

NW-1, 16 APR 2026 to 14 MAY 2026