

WAAS CH <b>56523</b> <b>W12A</b>	APP CRS <b>118°</b>	Rwy Idg TDZE Apt Elev	<b>4400</b> <b>3294</b> <b>3298</b>
--	------------------------	-----------------------------	---

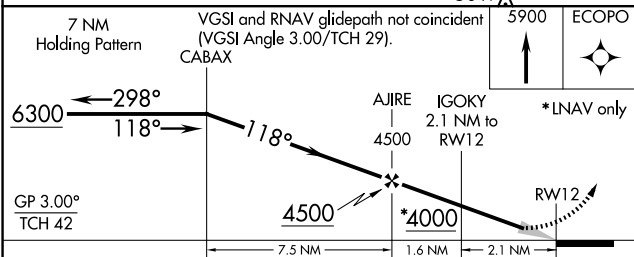
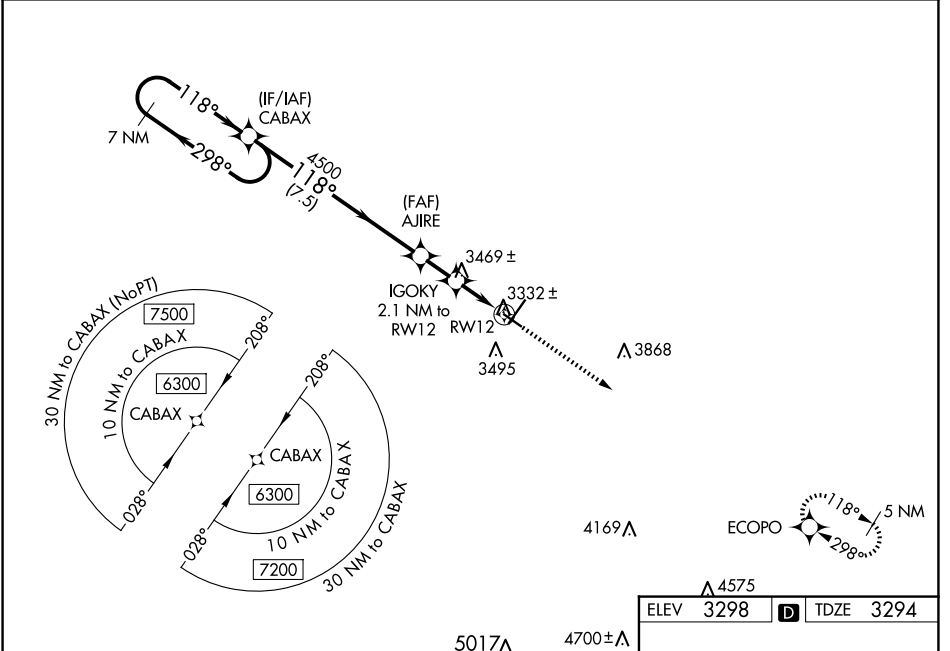
# RNAV (GPS) RWY 12

CHADRON MUNI (CDR)

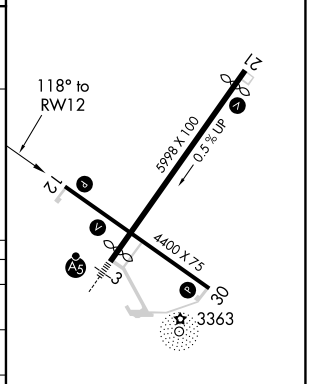
**⚠** Baro-VNAV NA when using Pine Ridge altimeter setting. For uncompensated Baro-VNAV systems, LNAV/VNAV NA below -21°C (-5°F) or above 54°C (130°F). DME/DME RNP-0.3 NA. When local altimeter setting not received, use Pine Ridge altimeter setting and increase all DA 70 feet and all MDA 80 feet; increase LPV all Cats visibility 1/8 mile, LNAV/VNAV all Cats visibility 1/4 mile, and Circling Cat C visibility 1/4 mile.

**MISSED APPROACH:**  
Climb to 5900 direct ECOPO and hold.

ASOS <b>118.05</b>	DENVER CENTER <b>127.95 338.2</b>	UNICOM <b>122.8 (CTAF) 0</b>
-----------------------	--------------------------------------	---------------------------------



ELEV	<b>3298</b>	TDZE	<b>3294</b>
------	-------------	------	-------------



CATEGORY	A	B	C	D
LPV DA	3544-1 250 (300-1)			NA
LNAV/VNAV DA	3719-1½ 425 (500-1½)			NA
LNAV MDA	3720-1	426 (500-1)	3720-1¼ 426 (500-1¼)	NA
CIRCLING	3820-1 522 (600-1)	3920-1 622 (700-1)	3920-1¾ 622 (700-1¾)	NA

HIRL Rwy 3-21 0  
MIRL Rwy 12-30 0  
REIL Rws 21 and 30 0

NC-2, 16 APR 2026 to 14 MAY 2026

NC-2, 16 APR 2026 to 14 MAY 2026