

WAAS CH 65615 W03A	APP CRS 028°	Rwy ldg 5211 TDZE 3294 Apt Elev 3298
--	------------------------	---


RNAV (GPS) RWY 3

CHADRON MUNI (CDR)

RNP APCH-GPS.

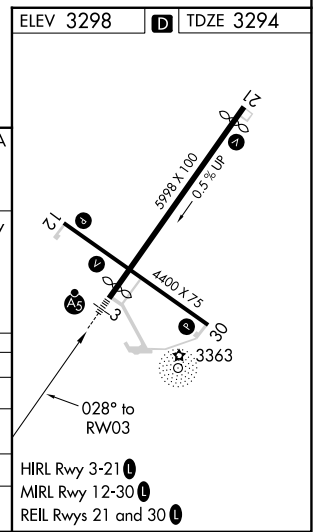
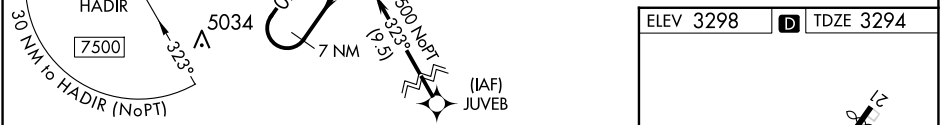
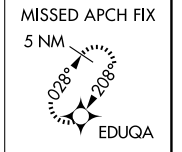
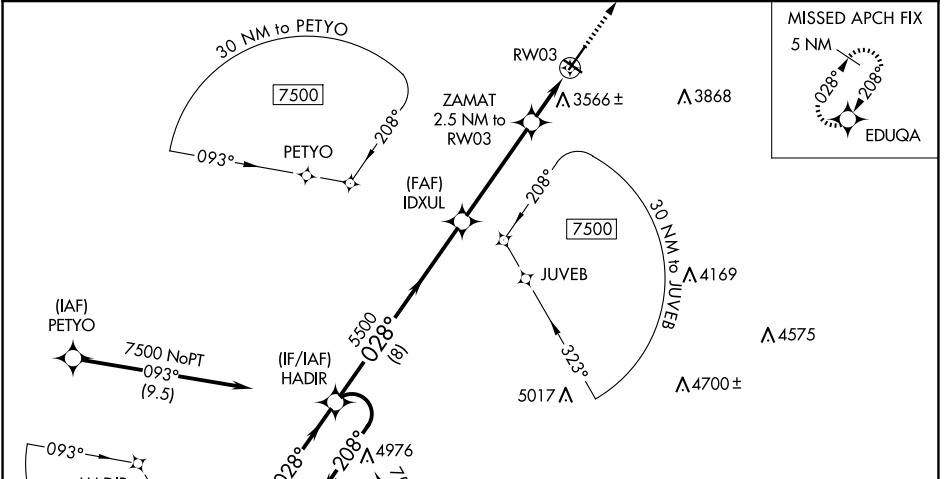
▼ Baro-VNAV NA when using Pine Ridge altimeter setting. For uncompensated Baro-VNAV systems, LNAV/VNAV NA below -21°C or above 54°C. For inop ALS, when using Pine Ridge altimeter setting, increase LNAV/VNAV all Cats visibility to 1½ SM, LNAV Cats C and D visibility to 1¾ SM. VDP NA with Pine Ridge altimeter setting. When local altimeter setting not received, use Pine Ridge altimeter setting and increase LPV DA to 3564 feet, increase LNAV/VNAV DA to 3972 feet and all visibilities ½ SM. Increase all MDAs 80 feet and LNAV visibility Cat C/D ¾ SM, and Circling visibility Cat C ¼ SM. Inop table does not apply to LPV all Cats and LNAV Cats A/B. For inop ALS increase LNAV/VNAV all Cats visibility to 1¾. When using Pine Ridge altimeter setting, inop table does not apply to LPV all Cats and LNAV Cats A/B.

MALSRL



MISSED APPROACH:
Climb to 5100 direct EDUQA and hold.

ASOS 118.05	DENVER CENTER 127.95 338.2	UNICOM 122.8 (CTAF) 1
-----------------------	--------------------------------------	---------------------------------



LPV DA	3494-1			200 (200-1)
LNAV/VNAV DA	3902-1¾			608 (700-1¾)
LNAV MDA	3820-1			526 (600-1)
CIRCLING	3820-1 522 (600-1)	3920-1 622 (700-1)	3920-1¾ 622 (700-1¾)	4220-3 922 (1000-3)

NC-2, 16 APR 2026 to 14 MAY 2026

NC-2, 16 APR 2026 to 14 MAY 2026