

APP CRS	Rwy Idg	<b>4205</b>
<b>183°</b>	TDZE	<b>1082</b>
	Apt Elev	<b>1084</b>

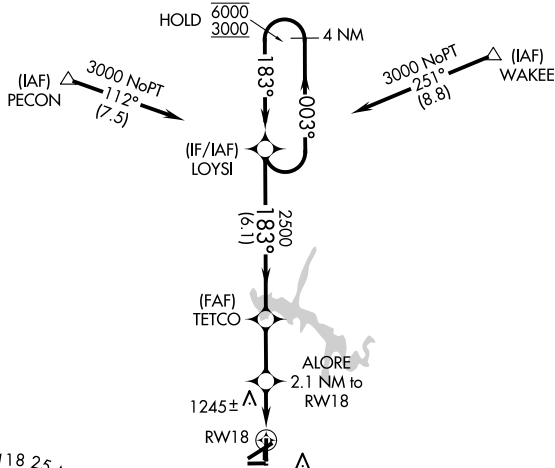
# RNAV (GPS) RWY 18

TULLAHOMA RGNL/WM NORTHERN FLD (THA)

RNP APCH - GPS.		MISSED APPROACH: Climb to 3400 direct KOJAK and hold.
	Rwy 18 helicopter visibility reduction below 1 SM NA. Circling NA to Rwys 9 and 27. Straight-in Rwy 18 NA at night, Circling Rwy 18, 36 NA at night.	

AWOS-3 <b>128.325</b>	MEMPHIS CENTER <b>128.15 323.125</b>	UNICOM <b>123.0 (CTAF)</b>
--------------------------	---	-------------------------------

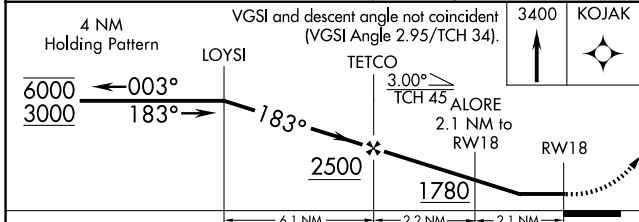
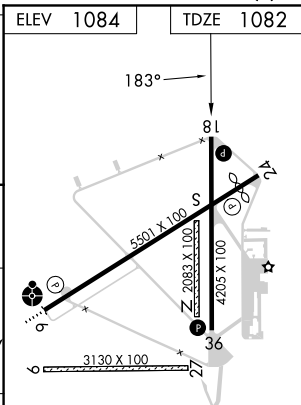
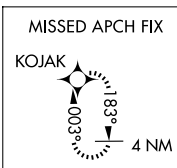
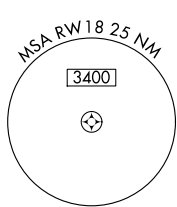
Procedure NA for arrivals at PECON on V321 southwest bound.



Procedure NA for arrivals at WAKEE on V16 eastbound.

SE-1, 16 APR 2026 to 14 MAY 2026

SE-1, 16 APR 2026 to 14 MAY 2026



CATEGORY	A	B	C	D
LNNAV MDA	1500-1	418 (500-1)	1500-1½	418 (500-1½)
CIRCLING	1540-1 456 (500-1)	1580-1 496 (500-1)	1620-1½ 536 (600-1½)	1640-2 556 (600-2)

MIRL Rwys 6-24 and 18-36   
REIL Rwys 6, 18, 24 and 36