

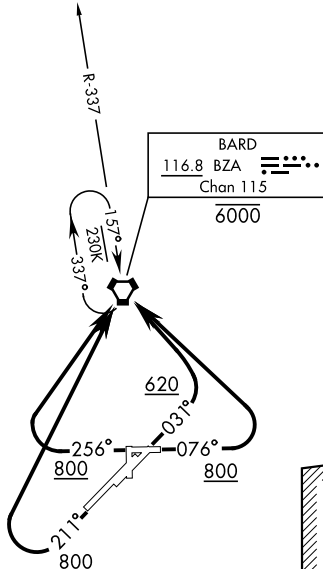
BARD ONE DEPARTURE (OBSTACLE) (BZA1.BZA)

YUMA, ARIZONA

ATIS 118.8 273.5
DEP CON
125.55 282.325
SAN DIEGO RADIO
122.6

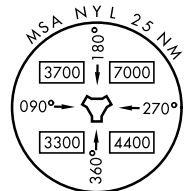
[USN]

Rwys 3L/R, 8: Do not exceed 240 KIAS until established direct BZA VORTAC.
Rwys 21L/R, 26: Do not exceed 250 KIAS until established direct BZA VORTAC.



UNITED STATES
MEXICO

R2301W



SW-4, 16 APR 2026 to 14 MAY 2026

SW-4, 16 APR 2026 to 14 MAY 2026

DEPARTURE ROUTE DESCRIPTION

TAKEOFF RWY 3L/R: Climb on heading 031° to 620, then climbing left turn direct BZA VORTAC, continue climb in BZA holding pattern to cross BZA at or above MEA for route of flight.

TAKEOFF RWY 8: Climb on heading 076° to 800, then climbing left turn direct BZA VORTAC, continue climb in BZA holding pattern to cross BZA at or above MEA for route of flight.

TAKEOFF RWY 21L/R: Climb on heading 211° to 800, then climbing right turn direct BZA VORTAC, continue climb in BZA holding pattern to cross BZA at or above MEA for route of flight.

TAKEOFF RWY 26: Climb on heading 256° to 800, then climbing right turn direct BZA VORTAC, continue climb in BZA holding pattern to cross BZA at or above MEA for route of flight.

BARD ONE DEPARTURE (OBSTACLE) (BZA1.BZA)

YUMA, ARIZONA