

# HI-TACAN Z RWY 3L

TACAN NYL Chan <b>84</b>	APCH CRS <b>039°</b>	Rwy Idg <b>13,300</b> TDZE <b>195</b> Arpt Elev <b>213</b>
-----------------------------	-------------------------	--

[USN]

YUMA MCAS/YUMA INTL (KNYL)

**MISSED APPROACH:** Climb to 1500, then climbing left turn to 4600, intercept NYL TACAN R-342 to JIMUK and hold, continue climb-in-hold to 4600.

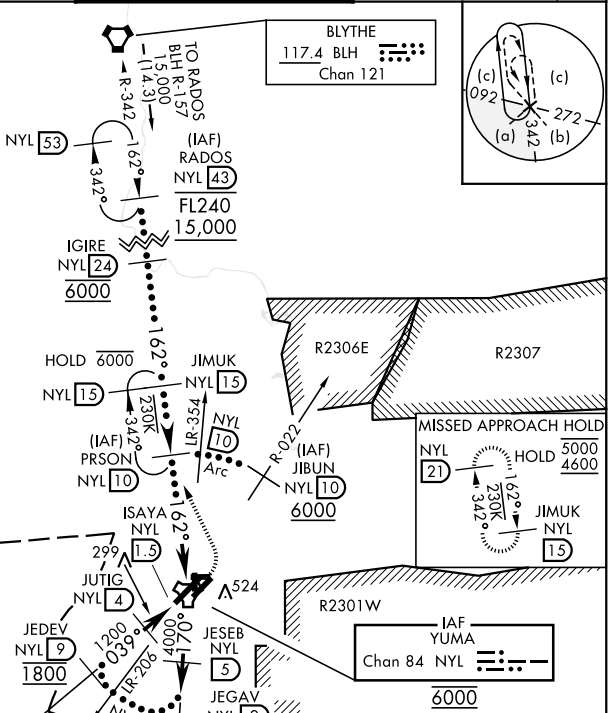
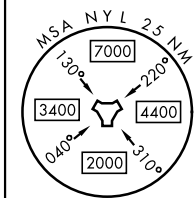
ATIS <b>118.8 273.5</b>	APP CON <b>124.7 371.975</b>	TOWER <b>119.3 (CTAF) 0 377.075</b>	GND CON <b>121.9 314.0</b>	ASR/PAR
----------------------------	---------------------------------	--	-------------------------------	---------

Request holding from Los Angeles ARTCC prior to frequency change to MCAS Yuma Approach Control.

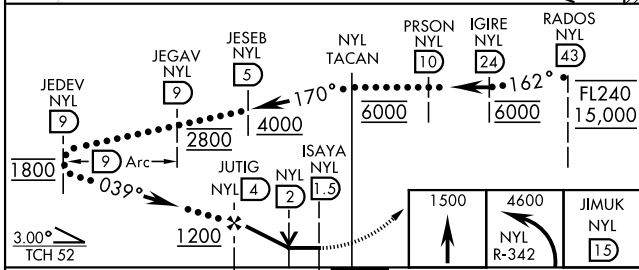
**CAUTION:**  
R-2507 and R-2512 located approximately 33 NM/28 NM NW respectively of NYL TACAN.

**CAUTION:** Intermediate segment 5.0 NM less than minimum 6.0 NM for CAT CDE.

Holding at IAF PRSON not authorized with aircraft holding at CAZZI or JIMUK.

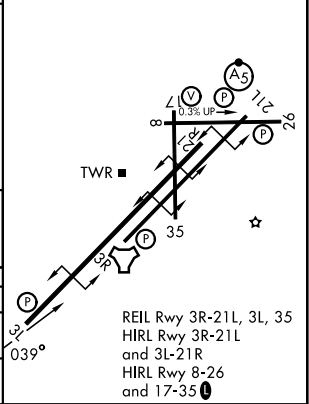


EMERG SAFE ALT 100 NM 18,000



ELEV	213	TDZE	195
------	-----	------	-----

CATEGORY	C	D	E
S-3L	560-1	365	(400-1)
CIRCLING	860-1¼ 647 (700-1¼)	860-2 647 (700-2)	860-2¼ 647 (700-2¼)



# HI-TACAN Z RWY 3L

SW-4, 16 APR 2026 to 14 MAY 2026

SW-4, 16 APR 2026 to 14 MAY 2026