

YUMA, ARIZONA


ILS or LOC RWY 21R

LOC I-YUM 108.3	APCH CRS 211°	Rwy Ldg 21L 9239 21R 13,300	TDZE 21L 208 21R 193	Arpt Elev 213
---------------------------	-------------------------	---	--	-------------------------

[USN] YUMA MCAS/YUMA INTL (KNYL)

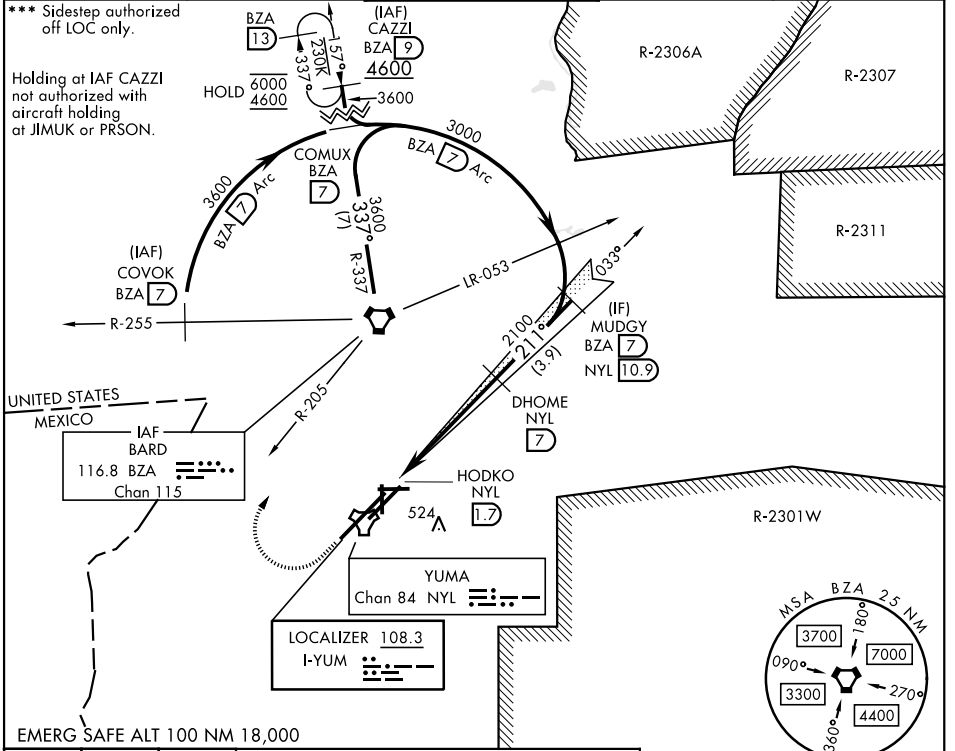
VOR, DME required

▲ * When ALS inop, increase vis to 3/4 mile.
 ** When ALS inop, increase CAT AB vis to 1 mile, CAT CD vis to 1 1/2 miles.

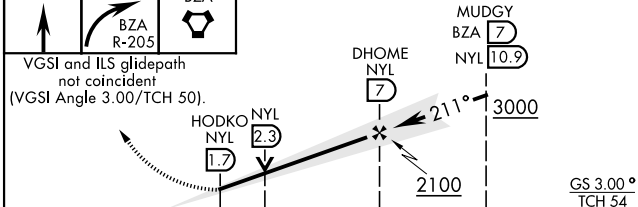
MALSR 

MISSED APPROACH: Climb to 900, then climbing right turn to 4600 heading 355° and intercept BZA VORTAC R-205 direct BZA. Then outbound via BZA R-337 to CAZZI and hold, continue climb-in-hold to 4600.

ATIS 118.8 273.5	APP CON 124.7 371.975	TOWER 119.3 (CTAF) 0 377.075	GND CON 121.9 314.0	ASR/PAR
----------------------------	---------------------------------	--	-------------------------------	---------

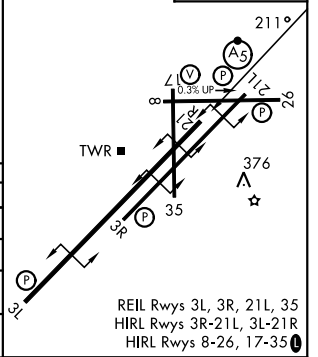


EMERG SAFE ALT 100 NM 18,000



ELEV 213	D	TDZE 21L 208
		TDZE 21R 193

CATEGORY	A	B	C	D
S-ILS 21R *	393-1/2	200	(200-1/2)	
S-LOC 21R **	600-1/2	407 (400-1/2)	600-3/4 407 (400-3/4)	
SIDESTEP 21L ***	600-1/2	392 (400-1/2)	600-2 392 (400-2)	600-2 1/2 392 (400-2 1/2)
CIRCLING	680-1	467 (500-1)	860-1 3/4 647 (700-1 3/4)	860-2 647 (700-2)



YUMA, ARIZONA
Amdt 7 22JAN26

32° 39' N - 114° 36' W

YUMA MCAS/YUMA INTL (KNYL)

ILS or LOC RWY 21R

SW-4, 16 APR 2026 to 14 MAY 2026

SW-4, 16 APR 2026 to 14 MAY 2026