

YUMA, ARIZONA

TACAN Y RWY 3L

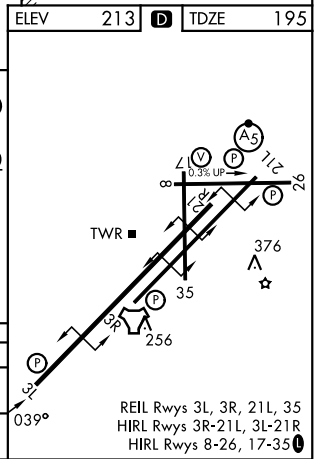
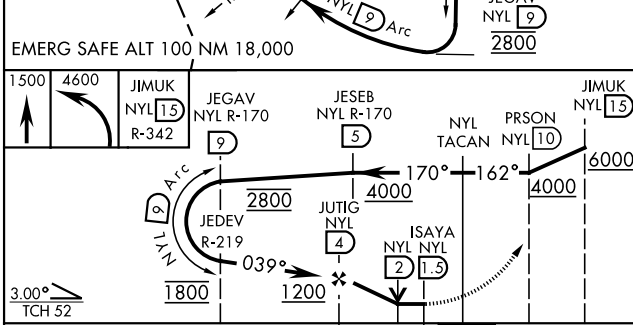
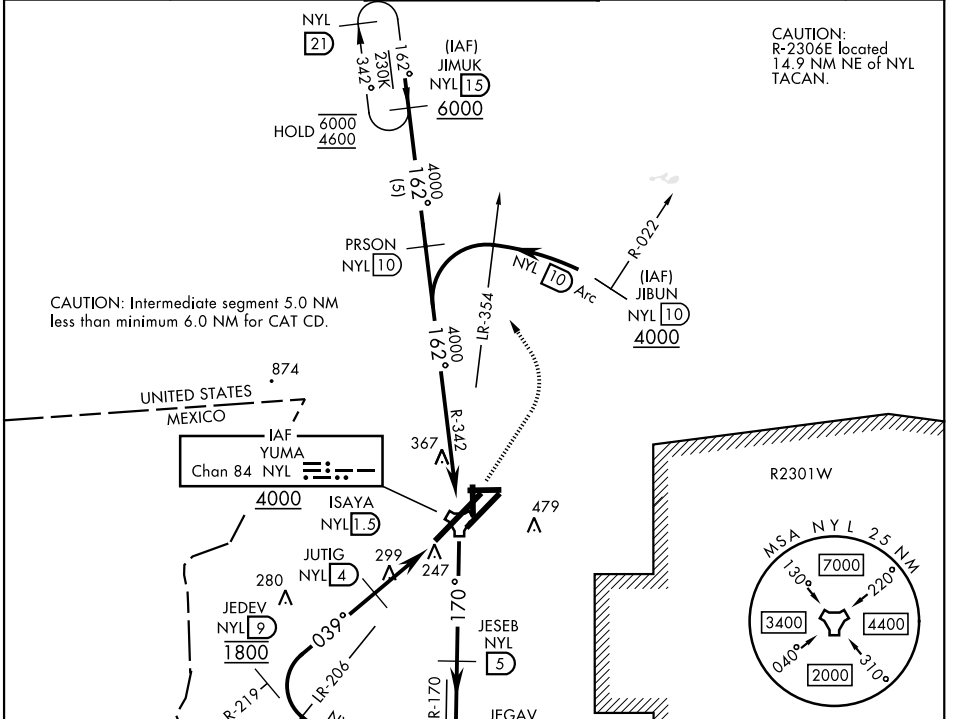
YUMA MCAS/YUMA INTL (KNYL)

TACAN NYL Chan 84	APCH CRS 039°	Rwy Idg 13,300 TDZE 195 Arprt Elev 213
-----------------------------	-------------------------	---

[USN]

MISSED APPROACH: Climb to 1500, then climbing left turn heading 297° to 4600 on NYL TACAN R-342 to JIMUK and hold, continue climb in hold to 4600.

ATIS 118.8 273.5	APP CON 124.7 371.975	TOWER 119.3 (CTAF) 0 377.075	GND CON 121.9 314.0	ASR/ PAR
----------------------------	---------------------------------	--	-------------------------------	-------------



CATEGORY	A	B	C	D
S-3L		560-1	365 (400-1)	
CIRCLING	680-1 467 (500-1)		860-1 3/4 647 (700-1 3/4)	860-2 647 (700-2)

YUMA, ARIZONA
Amdt 6 22JAN26

32°39'N-114°36'W

YUMA MCAS/YUMA INTL (KNYL)

TACAN Y RWY 3L

SW-4, 16 APR 2026 to 14 MAY 2026

SW-4, 16 APR 2026 to 14 MAY 2026