

LOC/DME I-DSO <b>109.9</b> Chan <b>36</b>	APP CRS <b>041°</b>	Rwy Ldg TDZE <b>8021</b> <b>389</b> Apt Elev <b>422</b>
-------------------------------------------------	------------------------	------------------------------------------------------------------

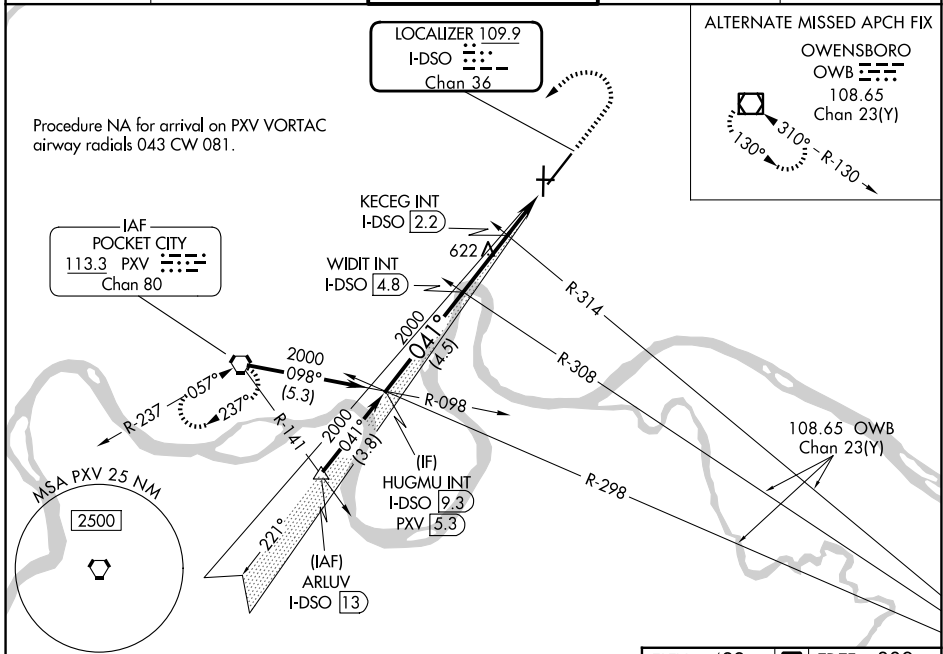
# ILS or LOC RWY 4

EVANSVILLE RGNL (EVV)

**ASR** Circling Rwy 9 NA at night.

MISSED APPROACH: Climb to 1500 then climbing left turn to 2500 direct PXV VORTAC and hold.

ATIS <b>120.2</b>	EVANSVILLE APP CON * <b>124.025 290.9</b>	EVANSVILLE TOWER * <b>118.7</b> (CTAF) <b>257.8</b>	GND CON <b>121.9</b>	UNICOM <b>122.95</b>
----------------------	----------------------------------------------	--------------------------------------------------------	-------------------------	-------------------------



EC-2, 16 APR 2026 to 14 MAY 2026

EC-2, 16 APR 2026 to 14 MAY 2026

	HUGMU INT I-DSO 9.3	WIDIT INT I-DSO 4.8	2000	2000	KECEG INT I-DSO 2.2	I-DSO DME ANTENNA I-DSO 1.2	I-DSO 0.2
	2000		041°	2000	1180		
	GS 3.00° TCH 49						
	4.5 NM		2.6 NM		1 NM	1.4 NM	
CATEGORY	A	B	C	D			
S-ILS 4	589-3/4		200 (200-3/4)				
S-LOC 4	1180-1 791 (800-1)	1180-1 1/4 791 (800-1 1/4)	1180-2 1/2	791 (800-2 1/2)			
CIRCLING	1180-1 758 (800-1)	1180-1 1/4 758 (800-1 1/4)	1180-2 1/2	758 (800-2 1/2)			
KECEG FIX MINIMUMS (DUAL VOR RECEIVERS OR DME REQUIRED)							
S-LOC 4	880-1	491 (500-1)	880-1 3/8	491 (500-1 3/8)			
CIRCLING	920-1 498 (500-1)	1040-1 618 (700-1)	1040-1 3/4 618 (700-1 3/4)	1040-2 618 (700-2)			

ELEV 422 **D** TDZE 389

HIRL Rwys 4-22 and 18-36 **(1)**  
REIL Rwys 4, 18, and 36 **(1)**  
MIRL Rwy 9-27 **(1)**

FAF to MAP 4.9 NM

Knots	60	90	120	150	180
Min:Sec	4:54	3:16	2:27	1:58	1:38