

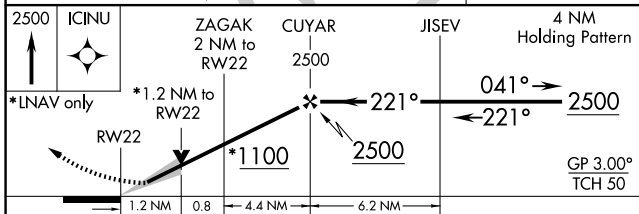
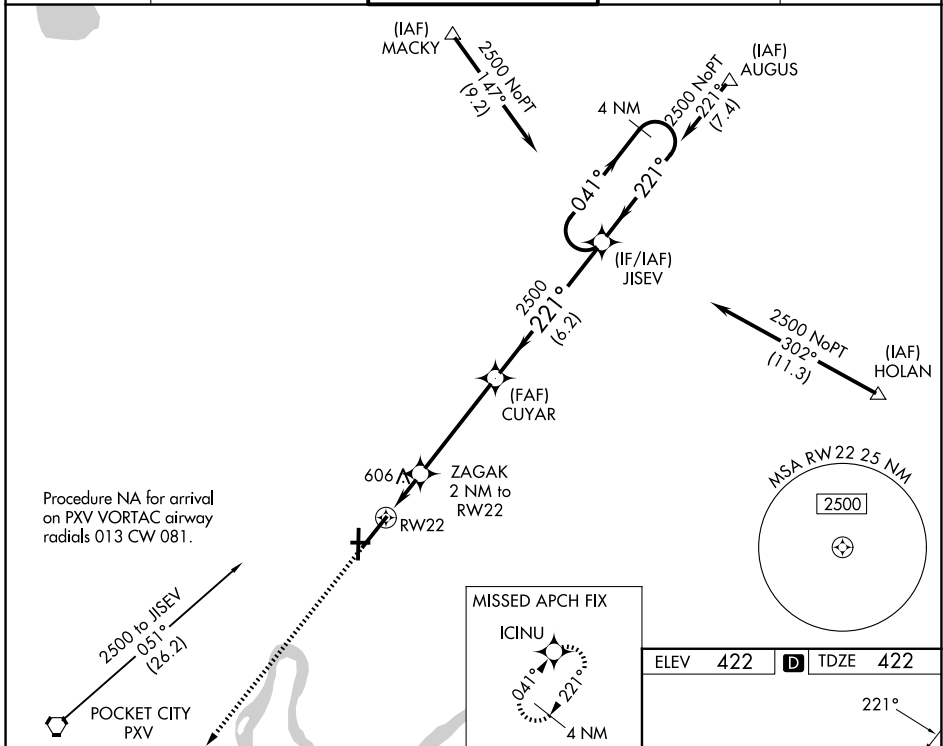
WAAS CH 42512 W22A	APP CRS 221°	Rwy Ldg TDZE 422 Apt Elev 422	8021
--	------------------------	---	-------------

RNAV (GPS) RWY 22

EVANSVILLE RGNL (EVV)

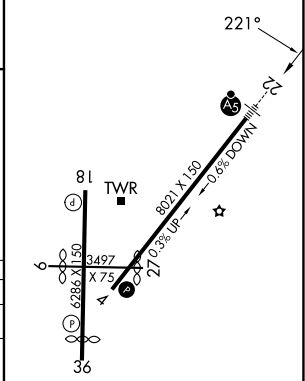
ASR	For uncompensated Baro-VNAV systems, LNAV/VNAV NA below -15°C (5°F) or above 54°C (130°F). DME/DME RNP-0.3 NA. Circling Rwy 9 NA at night. ** RVR 1800 authorized with the use of FD or AP or HUD to DA.	MALSR	MISSED APPROACH: Climb to 2500 direct ICINU and hold.

ATIS 120.2	EVANSVILLE APP CON * 124.025 290.9	EVANSVILLE TOWER * 118.7 (CTAF) 0 257.8	GND CON 121.9	UNICOM 122.95
----------------------	--	---	-------------------------	-------------------------



ELEV 422	D TDZE 422
----------	-------------------

2500	ICINU	ZAGAK 2 NM to RW22	CUYAR 2500	JISEV	4 NM Holding Pattern
*LNAV only		*1.2 NM to RW22			
	RW22	*1100			
	1.2 NM	0.8	4.4 NM	6.2 NM	
GP 3.00°					TCH 50
CATEGORY	A	B	C	D	
LPV DA		**622/24	200 (200-½)		
LNAV/VNAV DA		840/45	418 (500-¾)		
LNAV MDA	860/24	438 (500-½)	860/40	438 (500-¾)	
CIRCLING	920-1 498 (500-1)	1040-1 618 (700-1)	1040-1¾ 618 (700-1¾)	1040-2 618 (700-2)	



EC-2, 16 APR 2026 to 14 MAY 2026

EC-2, 16 APR 2026 to 14 MAY 2026