

WAAS CH 90421 W36A	APP CRS 004°	Rwy Ldg TDZE Apt Elev	5497 384 422
--	------------------------	-----------------------------	---

RNAV (GPS) RWY 36

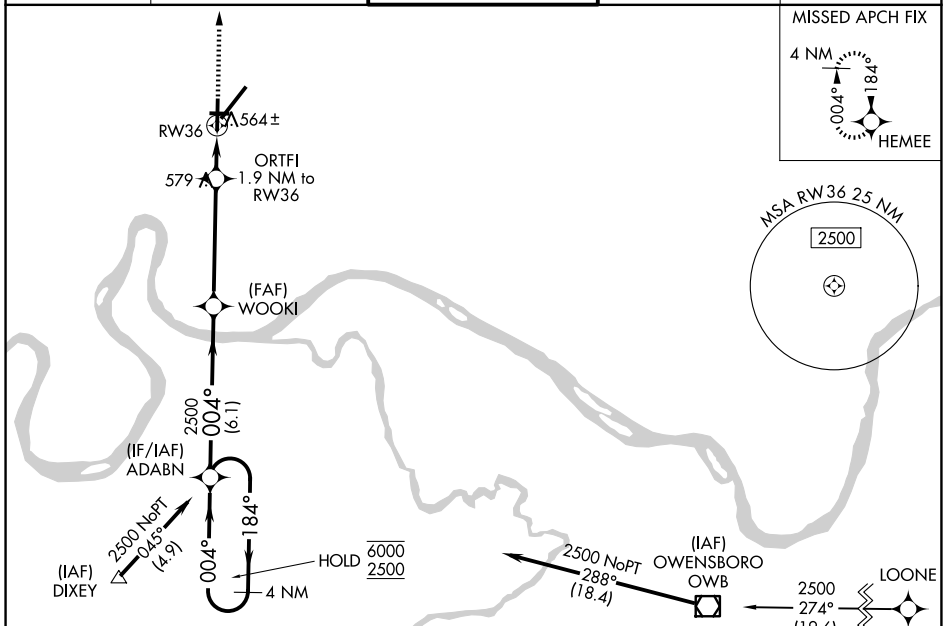
EVANSVILLE RGNL (EVV)

RNP APCH - GPS.

ASR For uncompensated Baro-VNAV systems, LNAV/VNAV NA below -13°C or above 54°C. Rwy 36 helicopter visibility reduction below 3/4 SM NA. Circling Rwy 9 NA at night.

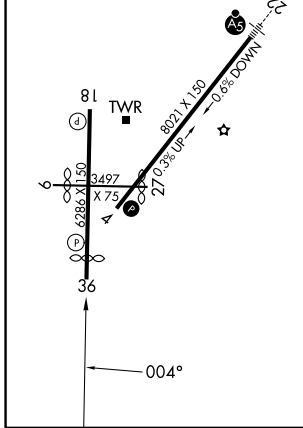
MISSED APPROACH: Climb to 2500 direct HEMEE and hold.

ATIS 120.2	EVANSVILLE APP CON ★ 124.025 290.9	EVANSVILLE TOWER ★ 118.7(CTAF) 257.8	GND CON 121.9	UNICOM 122.95
----------------------	--	--	-------------------------	-------------------------

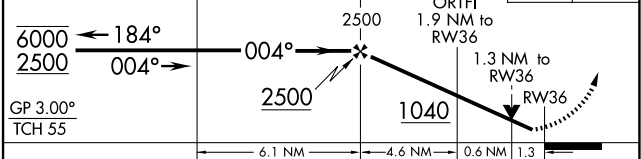


ELEV 422	D	TDZE 384
-----------------	----------	-----------------

HIRL Rwy 4-22 and 18-36
REIL Rwy 4, 18, and 36
MIRL Rwy 9-27



4 NM Holding Pattern
VGSi and RNAV glidepath not coincident (VGSi Angle 3.00/TCH 30).
2500 HEMEE



CATEGORY	A	B	C	D
LPV DA	640-3/4		256 (300-3/4)	
LNAV/VNAV DA	891-13/8		507 (500-13/8)	
LNAV MDA	820-1	436 (400-1)	820-1 1/4	436 (400-1 1/4)
CIRCLING	920-1 498 (500-1)	1040-1 618 (700-1)	1040-1 3/4 618 (700-1 3/4)	1040-2 618 (700-2)