

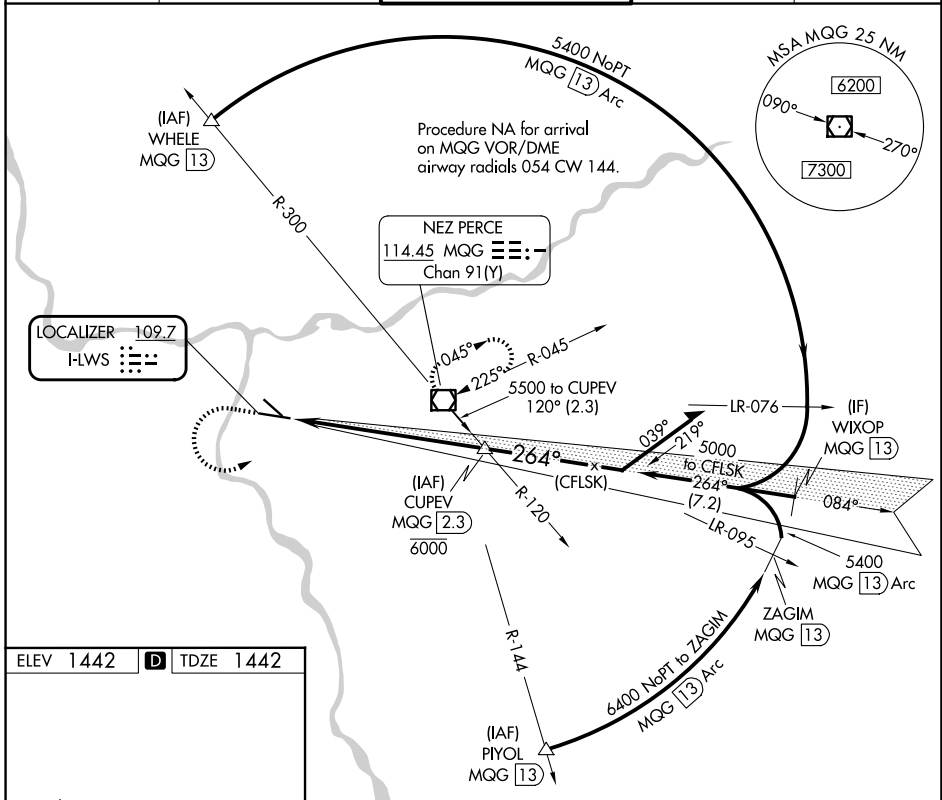
LOC I-LWS <b>109.7</b>	APP CRS <b>264°</b>	Rwy Ldg TDZE <b>1442</b> Apt Elev <b>1442</b>
---------------------------	------------------------	---

# ILS RWY 26

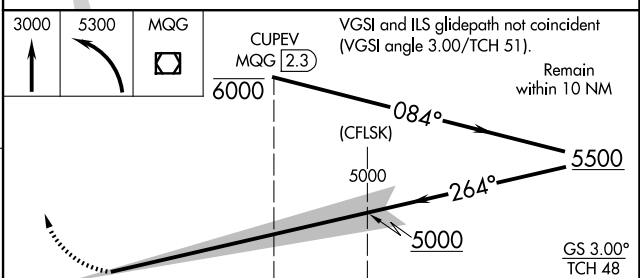
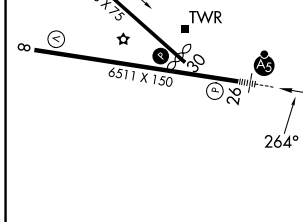
LEWISTON/NEZ PERCE COUNTY (LWS)

<p>When local altimeter setting not received, procedure NA. Autopilot coupled approach NA below 2500.</p>	<p>MALS</p>	<p>MISSED APPROACH: Climb to 3000 then climbing left turn to 5300 direct MQG VOR/DME and hold, continue climb-in-hold to 5300.</p>

ASOS <b>135.575</b>	SEATTLE CENTER <b>123.95 290.55</b>	LEWISTON TOWER ★ <b>119.4 (CTAF) 0 318.8</b>	GND CON <b>121.9</b>	UNICOM <b>122.95</b>
------------------------	--	---	-------------------------	-------------------------



ELEV 1442	<b>D</b>	TDZE 1442
-----------	----------	-----------



REIL Rwy 8	REIL RWY 12	HIRL Rwy 8-26	MIRL Rwy 12-30	
CATEGORY	A	B	C	D
S-ILS 26	1642-½ 200 (200-½)			

NW-1, 16 APR 2026 to 14 MAY 2026

NW-1, 16 APR 2026 to 14 MAY 2026