

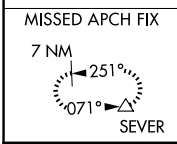
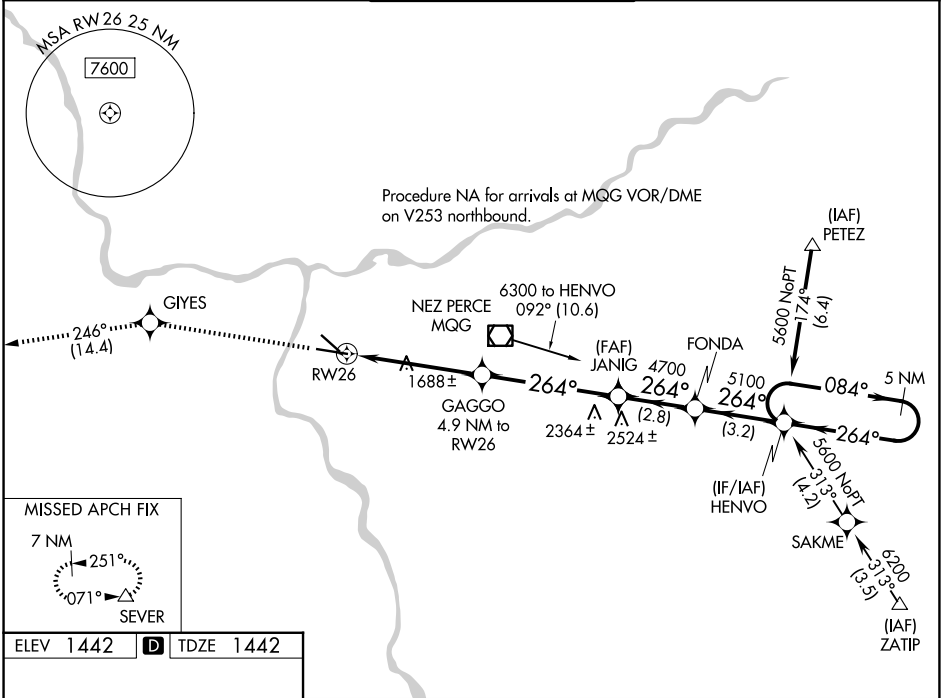
WAAS CH 78012 W26A	APP CRS 264°	Rwy Ldg TDZE Apt Elev	6511 1442 1442
---------------------------------	------------------------	-----------------------------	---

RNAV (GPS) Y RWY 26

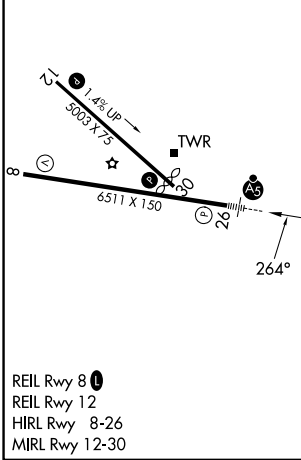
LEWISTON/NEZ PERCE COUNTY (LWS)

	For uncompensated Baro-VNAV systems, LNAV/VNAV NA below -17°C (2°F) or above 47°C (116°F). DME/DME RNP-0.3 NA.	MALSR 	MISSED APPROACH: Climb to 7000 direct GIYES and on track 246° to SEVER and hold, continue climb-in-hold to 7000.

ASOS 135.575	SEATTLE CENTER 123.95 290.55	LEWISTON TOWER ★ 119.4 (CTAF) 0 318.8	GND CON 121.9	UNICOM 122.95
------------------------	--	---	-------------------------	-------------------------



ELEV 1442	D	TDZE 1442
------------------	----------	------------------



7000	GIYES	SEVER	VGSi and RNAV glidepath not coincident (VGSi Angle 3.00/TCH 51).	
↑	✧	tr 246°	5 NM Holding Pattern	
*LNAV only				
RW26 → GAGGO (4.9 NM to RW26) → JANIG (4700) → FONDA (5100) → HENVO (5600) → SEVER (5600)				
*1.4 NM to RW26 → *3060 → 4700 → 5100 → 264° → 084° → 5600				
GP 3.00° TCH 51				
CATEGORY	A	B	C	D
LPV DA		1642-1/2	200 (200-1/2)	
LNAV/VNAV DA		1962-1/4	520 (600-1/4)	
LNAV MDA	1940-1/2	498 (500-1/2)	1940-1	498 (500-1)
CIRCLING	2000-1	558 (600-1)	2280-2 1/2 838 (900-2 1/2)	2500-3 1058 (1100-3)

NW-1, 16 APR 2026 to 14 MAY 2026

NW-1, 16 APR 2026 to 14 MAY 2026