

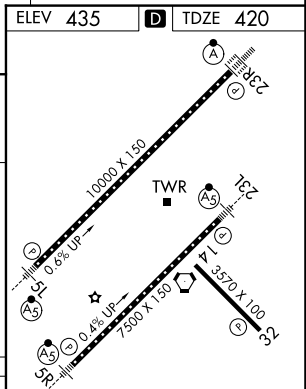
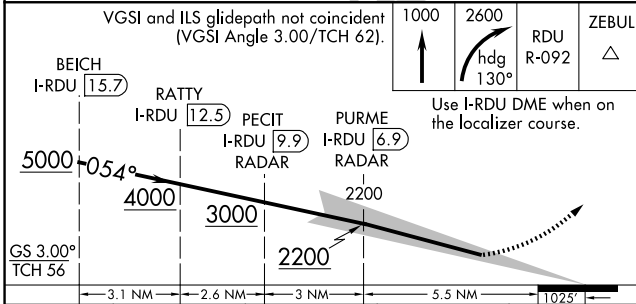
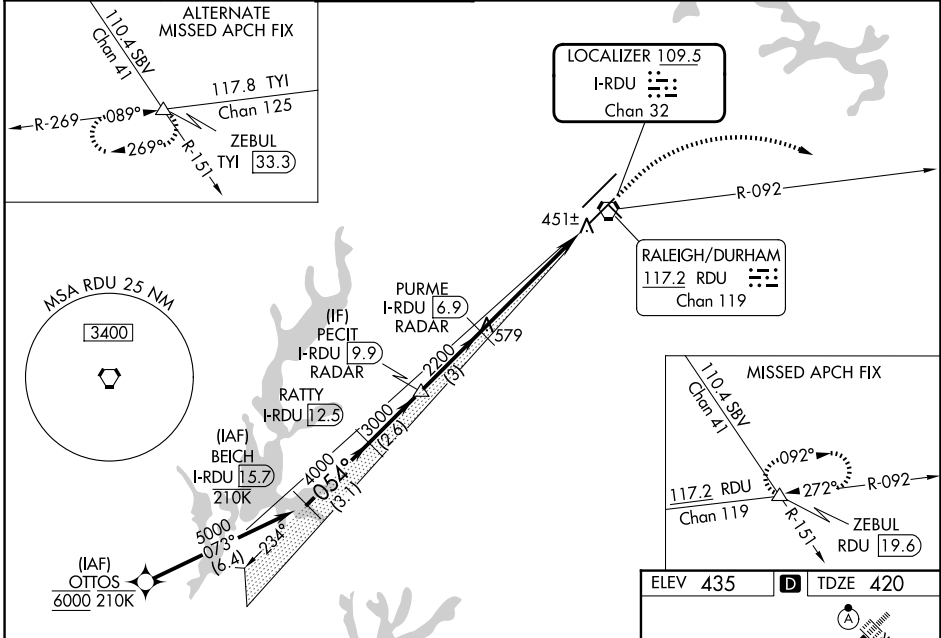
LOC/DME I-RDU 109.5 Chan 32	APP CRS 054°	Rwy Ldg 7500 TDZE 420 Apt Elev 435
--	------------------------	---

ILS RWY 5R (SA CAT I & II)

RALEIGH-DURHAM INTL (RDU)

RNAV 1-DME/DME/IRU or GPS or RADAR required for procedure entry. Simultaneous approach authorized. SA CAT I: Requires specific OPSPEC, MSPEC or LOA approval and use of HUD to DH. SA CAT II: Reduced lighting: Requires specific OPSPEC, MSPEC or LOA approval and use of autoland or HUD to touchdown.		MALSR MISSED APPROACH: Climb to 1000 then climbing right turn to 2600 on heading 130° and on RDU VORTAC R-092 to ZEBUL INT/RDU 19.6 DME and hold.
---	--	--

D-ATIS 123.8	RALEIGH APP CON 127.675 307.9	RALEIGH TOWER 127.45 257.8	GND CON 121.9 348.6	CLNC DEL 120.1	CPDLC
------------------------	---	--------------------------------------	-------------------------------	--------------------------	-------



CATEGORY	A	B	C	D
S-ILS 5R	SA CAT I	RA 230/14 150	DA 570	
S-ILS 5R	SA CAT II	RA 183/12 100	DA 520	

SA CATEGORY I & II ILS SPECIAL AIRCREW & AIRCRAFT CERTIFICATION REQUIRED

REIL Rwy 32
MIRL Rwy 14-32
HIRL Rwys 5R-23L and 5L-23R
TDZ/CL Rwys 23R, 23L and 5L

SE-2, 16 APR 2026 to 14 MAY 2026

SE-2, 16 APR 2026 to 14 MAY 2026