

LOC/DME I-LEI <b>108.5</b> Chan <b>22</b>	APP CRS <b>234°</b>	Rwy Ldg <b>7500</b> TDZE <b>435</b> Apt Elev <b>435</b>
---	------------------------	---

# ILS or LOC RWY 23L

RALEIGH-DURHAM INTL (RDU)

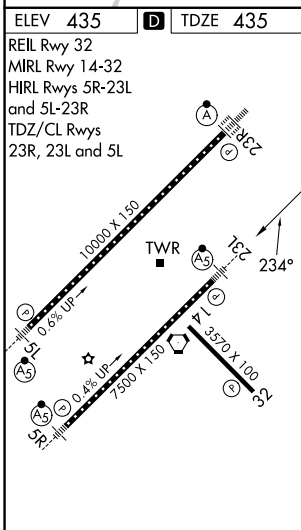
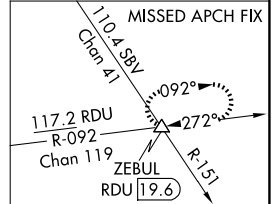
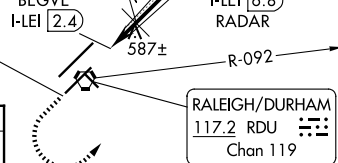
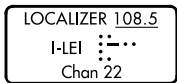
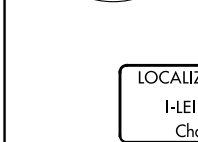
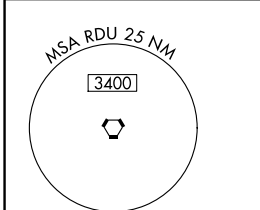
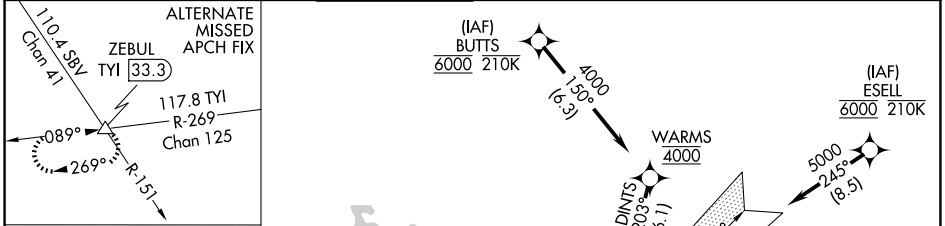
RNAV 1-DME/DME/IRU or GPS or RADAR required for procedure entry.  
DME required for LOC only.

**⚠** Simultaneous approach authorized. For inop ALS, increase S-ILS 23L all Cats visibility to RVR 5500. Localizer unusable for coupled approaches below 1100 or within 2 NM of threshold.



**MISSED APPROACH:** Climb to 1100 then climbing left turn to 2600 on heading 050° and RDU VORTAC R-092 to ZEBUL INT and hold.

D-ATIS <b>123.8</b>	RALEIGH APP CON <b>127.675 307.9</b>	<b>RALEIGH TOWER</b> <b>127.45 257.8</b>	GND CON <b>121.9 348.6</b>	CLNC DEL <b>120.1</b>	CPDLC
------------------------	---	---	-------------------------------	--------------------------	-------



ELEV 435	<b>D</b>	TDZE 435	REIL Rwy 32		MIRL Rwy 14-32		HIRL Rwy 5R-23L and 5L-23R		TDZ/CL Rwy 23R, 23L and 5L	
1100	2600	RDU R-092	ZEBUL	Localizer unusable from 1 NM from threshold.	DUWON I-LEI 15.6	DOCAT I-LEI 10	DINTS I-LEI 12.4	5000		
*LOC only.										
APUCU I-LEI 6.8			RADAR		3000		4000		5000	
BEGVE I-LEI 2.4			LEPEC I-LEI 3.7		2200		3000		5000	
GS 3.00° TCH 56										
1 NM   1.3 NM   3.1 NM   3.3 NM   2.4 NM   3.1 NM										
CATEGORY	A		B		C		D			
S-ILS 23L	806/35		371 (400-5/8)							
S-LOC 23L	840/40		405 (500-3/4)							
CIRCLING	960-1 1/4		525 (600-1 1/4)		1020-1 1/2		585 (600-1 1/2)		1180-2 1/2	
									745 (800-2 1/2)	

SE-2, 16 APR 2026 to 14 MAY 2026

SE-2, 16 APR 2026 to 14 MAY 2026