

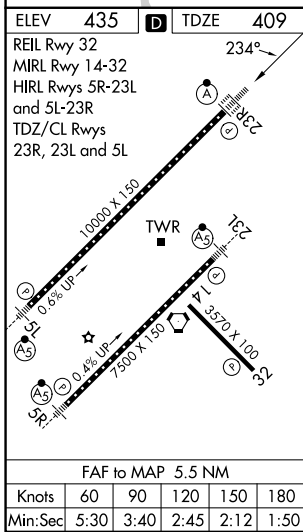
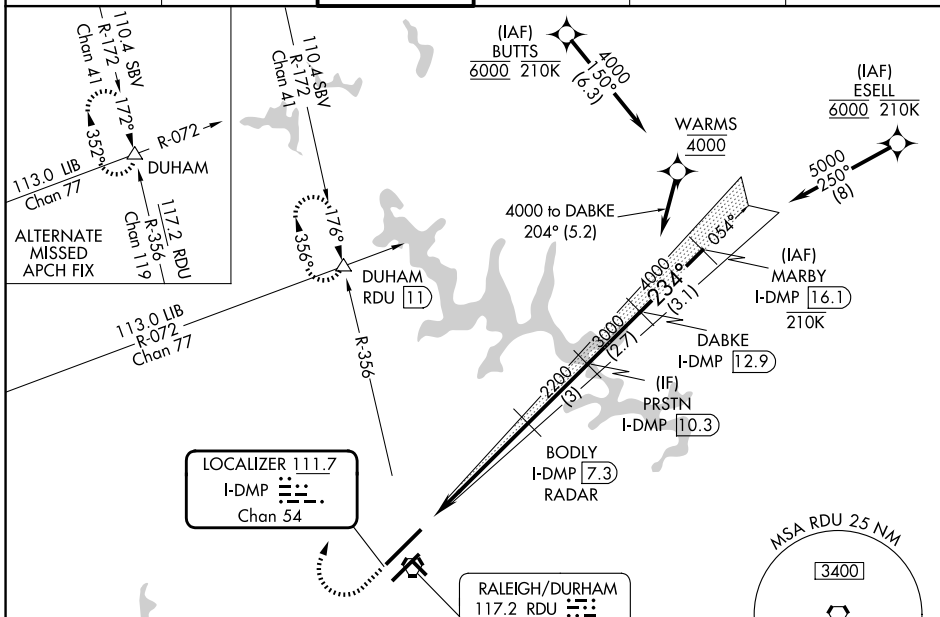
LOC/DME I-DMP 111.7 Chan 54	APP CRS 234°	Rwy Ldg TDZE 10000 409	Apt Elev 435
---	------------------------	--	------------------------

ILS or LOC RWY 23R

RALEIGH-DURHAM INTL (RDU)

RNAV 1-DME/DME/IRU or GPS or RADAR required for procedure entry. RADAR or DME required for LOC only.	ALSf-2 	MISSED APPROACH: Climb to 1000 then climbing right turn to 2200 on RDU VORTAC R-356 to DUHAM INT/RDU 11 DME and hold.
Simultaneous approach authorized. For inop ALS increase S-LOC 23R Cat C/D visibility to 1 1/2 SM.		

D-ATIS 123.8	RALEIGH APP CON 127.675 307.9	RALEIGH TOWER 127.45 257.8	GND CON 121.9 348.6	CLNC DEL 120.1	CPDLC
------------------------	---	--------------------------------------	-------------------------------	--------------------------	-------



ELEV 435	TDZE 409	RDU R-356				VGSI and ILS glidepath not coincident (VGSI Angle 3.00/TCH 69).			
REIL Rwy 32	MIRL Rwy 14-32	BODY I-DMP 7.3		PRSTN I-DMP 10.3		DABKE I-DMP 12.9		MARBY I-DMP 16.1	
HIRL Rwys 5R-23L and 5L-23R	TDZ/CL Rwys 23R, 23L and 5L	*LOC only.		2200		3000		4000	
		I-DMP 1.8		*I-DMP 3.4		2200		5000	
		1.6 NM		3.9 NM		3 NM		2.7 NM	
		3.1 NM							
		GS 3.00° TCH 55							
FAF to MAP 5.5 NM		CATEGORY A		CATEGORY B		CATEGORY C		CATEGORY D	
		S-ILS 23R		609/18		200 (200-1/2)			
		S-LOC 23R		980/24		571 (600-1/2)		980-1 1/4 571 (600-1 1/4)	
		CIRCLING		980-1		545 (600-1)		1020-1 1/2 585 (600-1 1/2) 1180-2 1/2 745 (800-2 1/2)	

SE-2, 16 APR 2026 to 14 MAY 2026

SE-2, 16 APR 2026 to 14 MAY 2026