

LOC/DME I-GKK 109.1 Chan 28	APP CRS 054°	Rwy Ldg TDZE 10000 384 Apt Elev 435
--	------------------------	--

ILS or LOC RWY 5L

RALEIGH-DURHAM INTL (RDU)

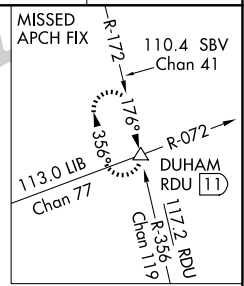
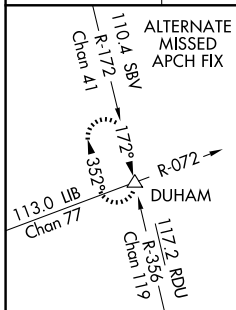
RNAV 1-DME/DME/IRU or GPS or RADAR required for procedure entry. DME or RADAR required for LOC only.

Simultaneous approach authorized.

MALSRL

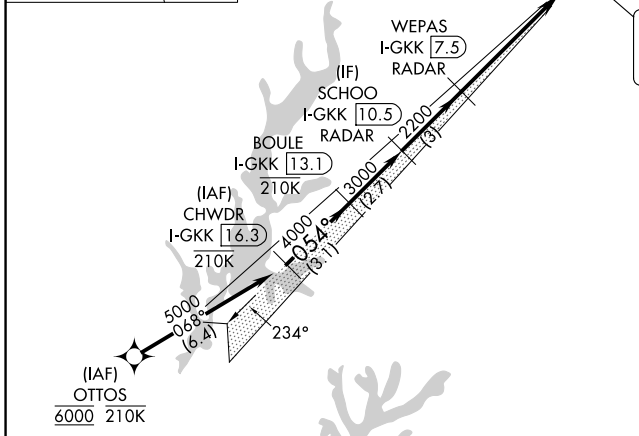
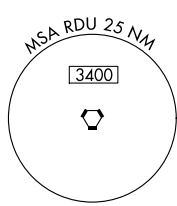
MISSED APPROACH: Climb to 1000 then climbing left turn to 2200 on heading 310° and RDU VORTAC R-356 to DUHAM INT/ RDU 11 DME and hold.

D-ATIS 123.8	RALEIGH APP CON 127.675 307.9	RALEIGH TOWER 127.45 257.8	GND CON 121.9 348.6	CLNC DEL 120.1	CPDLC
------------------------	---	--------------------------------------	-------------------------------	--------------------------	-------



LOCALIZER **109.1**
I-GKK
Chan 28

RALEIGH/DURHAM
117.2 RDU
Chan 119



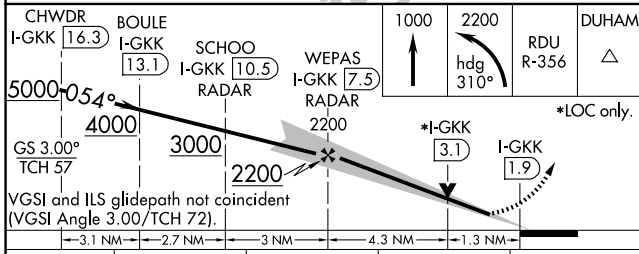
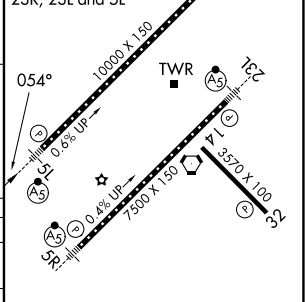
ELEV 435	TDZE 384
----------	----------

REIL Rwy 32

MIRL Rwy 14-32

HIRL Rwys 5R-23L and 5L-23R

TDZ/CL Rwys 23R, 23L and 5L



CATEGORY	A	B	C	D
S-ILS 5L	598/18 214 (200-½)			
S-LOC 5L	840/24 456 (500-½)	840/45 456 (500-¾)		
CIRCLING	960-1 525 (600-1)	1020-1½ 585 (600-1½)	1180-2½ 745 (800-2½)	

FAF to MAP 5.6 NM					
Knots	60	90	120	150	180
Min:Sec	5:36	3:44	2:48	2:14	1:52

SE-2, 16 APR 2026 to 14 MAY 2026

SE-2, 16 APR 2026 to 14 MAY 2026