

LOC/DME I-RDU 109.5 Chan 32	APP CRS 054°	Rwy Ldg 7500 TDZE 420 Apt Elev 435
------------------------------------------	------------------------	---------------------------------------------------------------

ILS or LOC RWY 5R

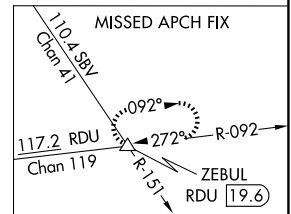
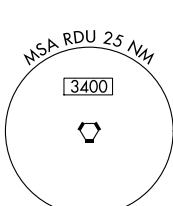
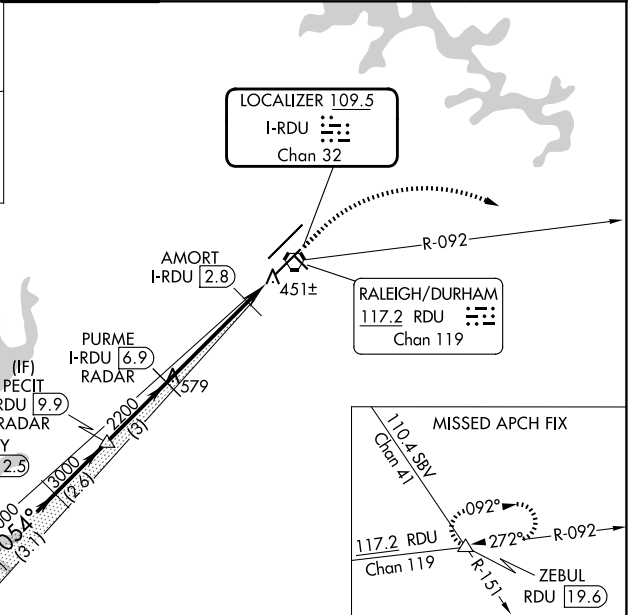
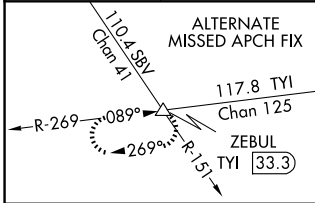
RALEIGH-DURHAM INTL (RDU)

RNAV 1-DME/DME/IRU or GPS or RADAR required for procedure entry. DME or RADAR required for LOC only.

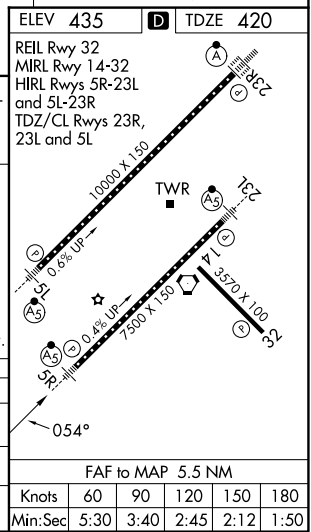
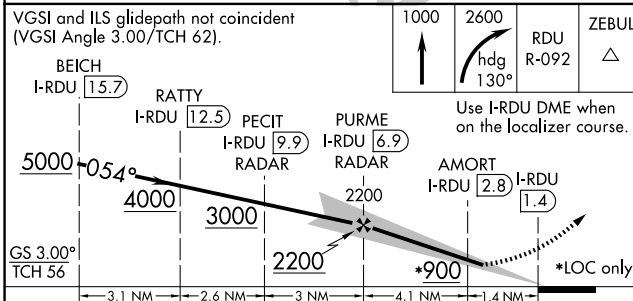
Simultaneous approach authorized.
RVR 1800 authorized with use of FD or AP or HUD to DA.

MALS MISSED APPROACH: Climb to 1000 then climbing right turn to 2600 on heading 130° and on RDU VORTAC R-092 to ZEBUL INT/ RDU 19.6 DME and hold.

D-ATIS 123.8	RALEIGH APP CON 127.675 307.9	RALEIGH TOWER 127.45 257.8	GND CON 121.9 348.6	CLNC DEL 120.1	CPDLC
------------------------	-----------------------------------------	--------------------------------------	-------------------------------	--------------------------	-------



VGSI and ILS glidepath not coincident (VGSI Angle 3.00/TCH 62).



CATEGORY	A	B	C	D
S-ILS 5R #	620/24		200 (200-½)	
S-LOC 5R	760/24 340 (400-½)		760/26 340 (400-½)	
CIRCLING	960-1 525 (600-1)		1020-1½ 1180-2½ 585 (600-1½) 745 (800-2½)	

FAF to MAP 5.5 NM					
Knots	60	90	120	150	180
Min:Sec	5:30	3:40	2:45	2:12	1:50

SE-2, 16 APR 2026 to 14 MAY 2026

SE-2, 16 APR 2026 to 14 MAY 2026