

(LWOOD5.LWOOD) 24361

AL-516 (FAA)

RALEIGH-DURHAM INTL (RDU)
RALEIGH/DURHAM, NORTH CAROLINA

LWOOD FIVE DEPARTURE (RNAV)

RALEIGH DEP CON
132.35 256.9
D-ATIS
123.8
CLNC DEL
120.1
CPDLC
GND CON
121.9 348.6
RALEIGH TOWER
127.45 257.8

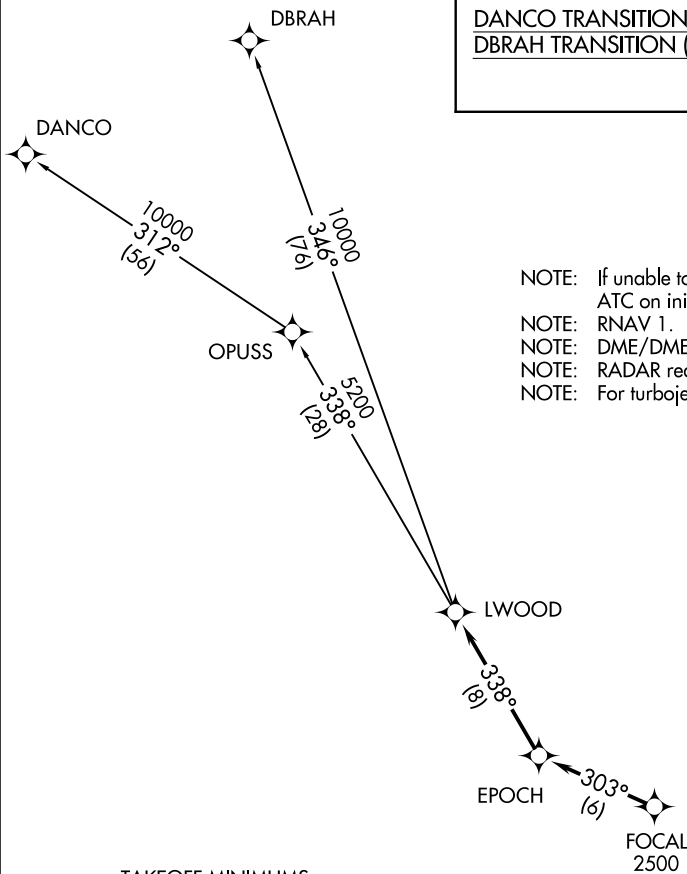
**TOP ALTITUDE:
6000**

DEPARTURE ROUTE DESCRIPTION

TAKEOFF RUNWAYS 5L/R, 23L/R: Climb on assigned heading for RADAR vectors to cross FOCAL at or above 2500, thence. . . .

. . . .on depicted route to LWOOD.
Maintain 6000. Expect clearance to filed altitude within ten minutes after departure.

DANCO TRANSITION (LWOOD5.DANCO)
DBRAH TRANSITION (LWOOD5.DBRAH)



- NOTE: If unable to accept climb rate, advise ATC on initial contact.
- NOTE: RNAV 1.
- NOTE: DME/DME/IRU or GPS required.
- NOTE: RADAR required.
- NOTE: For turbojet aircraft only.

TAKEOFF MINIMUMS

Rwys 14, 32: NA - ATC.

Rwys 5L/R: Standard.

Rwy 23L: Standard with minimum climb of 250' per NM to 2300.

Rwy 23R: Standard with minimum climb of 240' per NM to 2100.



NOTE: Chart not to scale.

SE-2, 16 APR 2026 to 14 MAY 2026

SE-2, 16 APR 2026 to 14 MAY 2026

LWOOD FIVE DEPARTURE (RNAV)

(LWOOD5.LWOOD) 02DEC21

RALEIGH/DURHAM, NORTH CAROLINA
RALEIGH-DURHAM INTL (RDU)