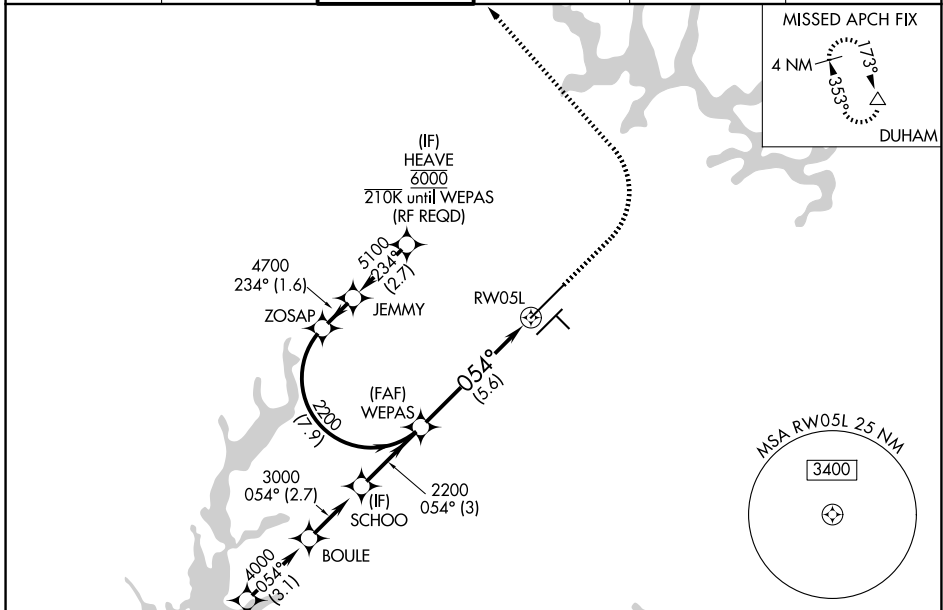


APP CRS	Rwy Ldg	10000
054°	TDZE	384
	Apt Elev	435

RNAV (RNP) Z RWY 5L

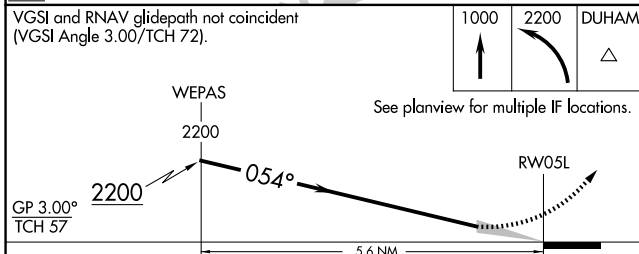
RALEIGH-DURHAM INTL (RDU)

RNP AR APCH-GPS.				MALSR	MISSED APPROACH: Climb to 1000 then climbing left turn to 2200 direct DUHAM and hold.
▼ For uncompensated Baro-VNAV systems, procedure NA below -1°C or above 54°C. Simultaneous approach authorized, except for arrivals at HEAVE. For inop ALS, increase RNP 0.10 all Cats visibility to RVR 4500.					
D-ATIS	RALEIGH APP CON	RALEIGH TOWER	GND CON	CLNC DEL	CPDLC
123.8	127.675 307.9	127.45 257.8	121.9 348.6	120.1	



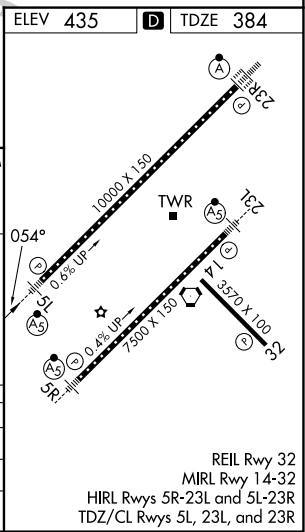
(IAF) OTTOS
6000 210K

VGSI and RNAV glidepath not coincident (VGSI Angle 3.00/TCH 72).



CATEGORY	A	B	C	D
RNP 0.10 DA		684/24	300 (300-½)	
RNP 0.30 DA		780/35	396 (400-⅝)	

AUTHORIZATION REQUIRED



REIL Rwy 32
MIRL Rwy 14-32
HIRL Rwys 5R-23L and 5L-23R
TDZ/CL Rwys 5L, 23L, and 23R

SE-2, 16 APR 2026 to 14 MAY 2026

SE-2, 16 APR 2026 to 14 MAY 2026