


APP CRS	Rwy Ldg	7500
054°	TDZE	420
	Apt Elev	435

RNAV (RNP) Z RWY 5R

RALEIGH-DURHAM INTL (RDU)

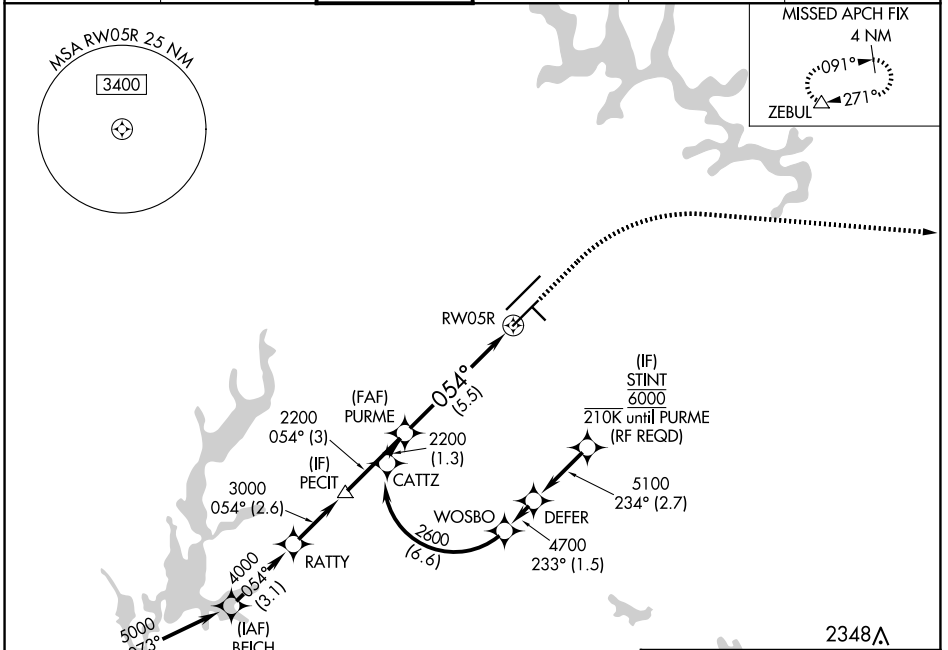
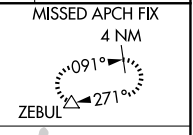
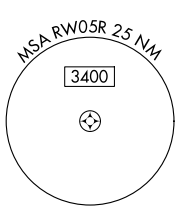
RNP AR APCH-GPS.

▼ For uncompensated Baro-VNAV systems, procedure NA below -12°C or above 54°C. For inop ALS, increase RNP 0.30 all Cats visibility to RVR 4500. Simultaneous approach authorized, except for arrivals at STINT.

MALSR 

MISSED APPROACH: Climb to 1000 then climbing right turn to 2600 direct ZEBUL and hold.

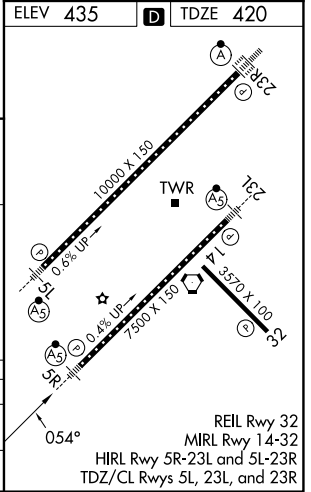
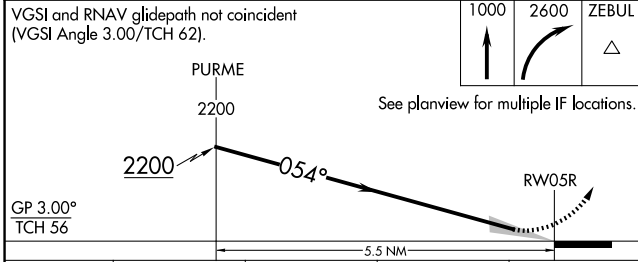
D-ATIS	RALEIGH APP CON	RALEIGH TOWER	GND CON	CLNC DEL	CPDLC
123.8	127.675 307.9	127.45 257.8	121.9 348.6	120.1	



SE-2, 16 APR 2026 to 14 MAY 2026

SE-2, 16 APR 2026 to 14 MAY 2026

ELEV 435	D TDZE 420
----------	-------------------



CATEGORY	A	B	C	D
RNP 0.30 DA	721/24 301 (400-½)			
AUTHORIZATION REQUIRED				