

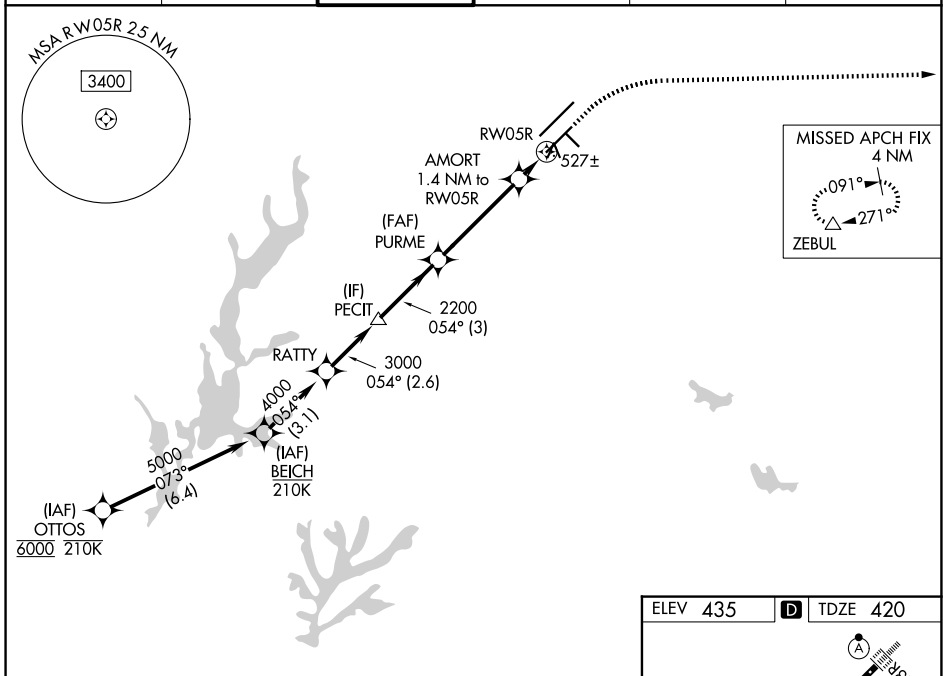
WAAS CH 90213 W05B	APP CRS 054°	Rwy Ldg 7500 TDZE 420 Apt Elev 435
--	------------------------	---

RNAV (GPS) Y RWY 5R

RALEIGH-DURHAM INTL (RDU)

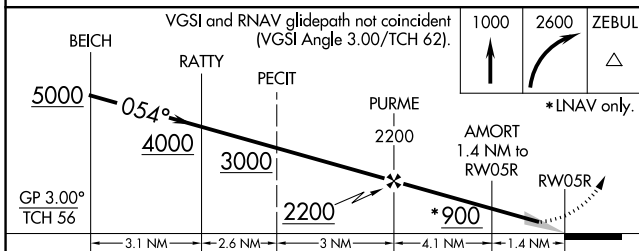
RNP APCH-GPS.	<p>Simultaneous approach authorized. LNAV procedure NA during simultaneous operations. For uncompensated Baro-VNAV systems, LNAV/VNAV NA below -12°C or above 54°C. Use of FD or AP required during simultaneous operations. For inop ALS, increase LNAV/VNAV all Cats visibility to RVR 4500 and LNAV Cats C/D visibility to RVR 5500. # RVR 1800 authorized with use of FD or AP or HUD to DA.</p>	MALSRL	MISSED APPROACH: Climb to 1000 then climbing right turn to 2600 direct ZEBUL and hold.
---------------	--	--------	---

D-ATIS 123.8	RALEIGH APP CON 127.675 307.9	RALEIGH TOWER 127.45 257.8	GND CON 121.9 348.6	CLNC DEL 120.1	CPDLC
------------------------	---	--------------------------------------	-------------------------------	--------------------------	-------



SE-2, 16 APR 2026 to 14 MAY 2026

SE-2, 16 APR 2026 to 14 MAY 2026



CATEGORY	A	B	C	D
LPV DA	#620/24		200 (200-½)	
LNAV/VNAV DA	688/24		268 (300-½)	
LNAV MDA	780/24	360 (400-½)	780/40	360 (400-¾)
CIRCLING	960-1	525 (600-1)	1020-1½ 585 (600-1½)	1180-2½ 745 (800-2½)

