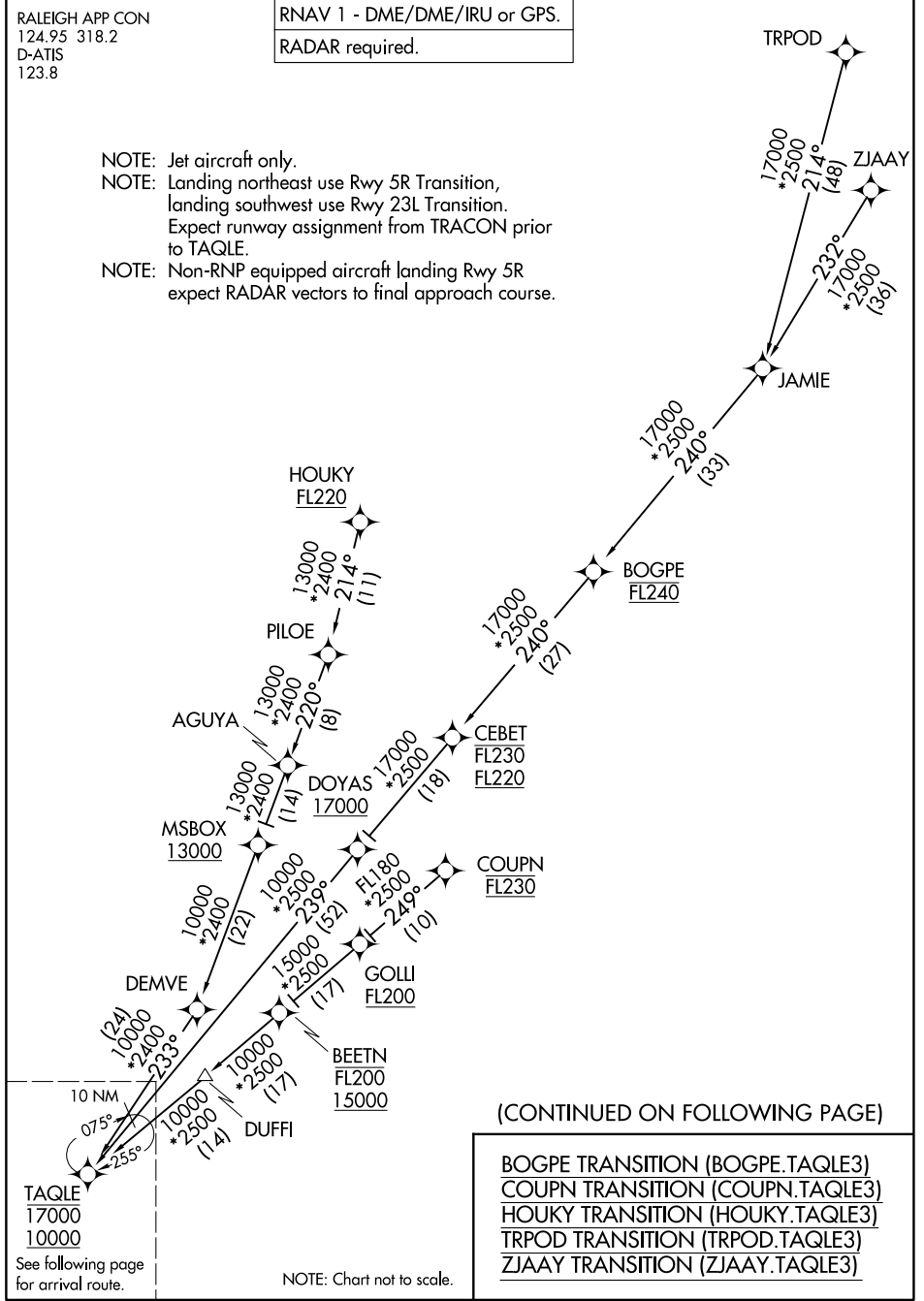


TAQLE THREE ARRIVAL (RNAV) Transition Routes

RALEIGH APP CON
124.95 318.2
D-ATIS
123.8

RNAV 1 - DME/DME/IRU or GPS.
RADAR required.

- NOTE: Jet aircraft only.
 NOTE: Landing northeast use Rwy 5R Transition,
 landing southwest use Rwy 23L Transition.
 Expect runway assignment from TRACON prior
 to TAQLE.
 NOTE: Non-RNP equipped aircraft landing Rwy 5R
 expect RADAR vectors to final approach course.



SE-2, 16 APR 2026 to 14 MAY 2026

SE-2, 16 APR 2026 to 14 MAY 2026

(TAQLE.TAQLE3) 26022

AL-516 (FAA)

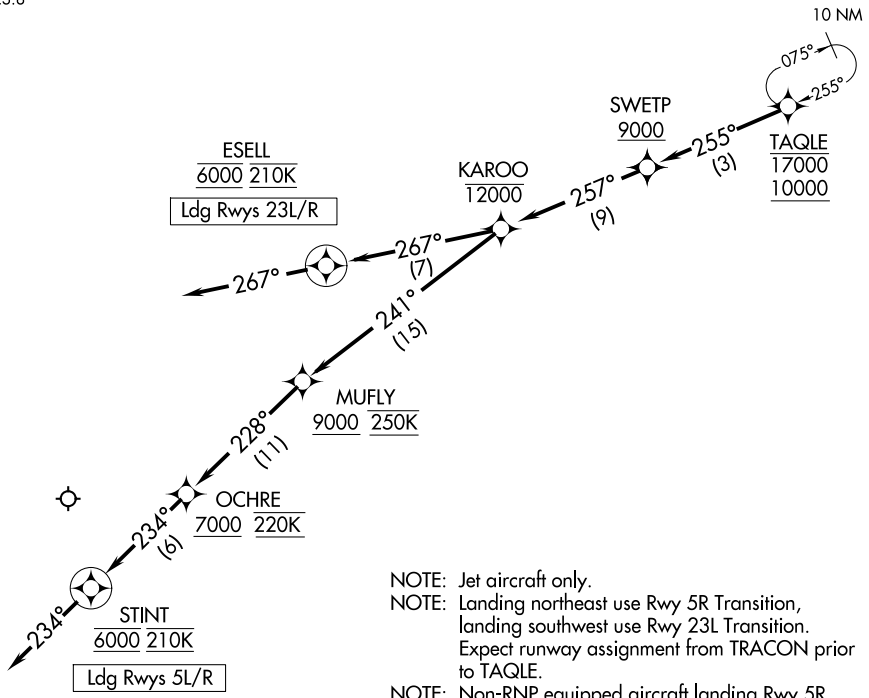
RALEIGH-DURHAM INTL (RDU)
RALEIGH/DURHAM, NORTH CAROLINA

TAQLE THREE ARRIVAL (RNAV) Arrival Routes

RALEIGH APP CON
124.95 318.2
D-ATIS
123.8

RNAV 1 - DME/DME/IRU or GPS.

RADAR required.



- NOTE: Jet aircraft only.
- NOTE: Landing northeast use Rwy 5R Transition, landing southwest use Rwy 23L Transition. Expect runway assignment from TRACON prior to TAQLE.
- NOTE: Non-RNP equipped aircraft landing Rwy 5R expect RADAR vectors to final approach course.

NOTE: Chart not to scale.

ARRIVAL ROUTE DESCRIPTION

From TAQLE on track 255° to cross SWETP at or above 9000, then on track 257° to cross KAROO at or below 12000.

LANDING RUNWAYS 5L/R: From KAROO on track 241° to cross MUFLY at or above 9000 and at 250K, then on track 228° to cross OCHRE at or above 7000 and at 220K, then on track 234° to cross STINT at 6000 and at 210K, then on track 234°. Expect RNP RWY 5R approach or RADAR vectors to Rwy 5L/R final approach course.

LANDING RUNWAYS 23L/R: From KAROO on track 267° to cross ESELL at 6000 and at 210K. Expect ILS or RNAV RWY 23L/R approach or RADAR vectors to Rwy 23L/R final approach course.

TAQLE THREE ARRIVAL (RNAV) Arrival Routes
(TAQLE.TAQLE3) 22JAN26

RALEIGH/DURHAM, NORTH CAROLINA
RALEIGH-DURHAM INTL (RDU)

SE-2, 16 APR 2026 to 14 MAY 2026

SE-2, 16 APR 2026 to 14 MAY 2026