

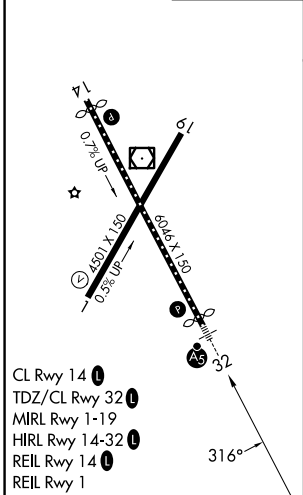
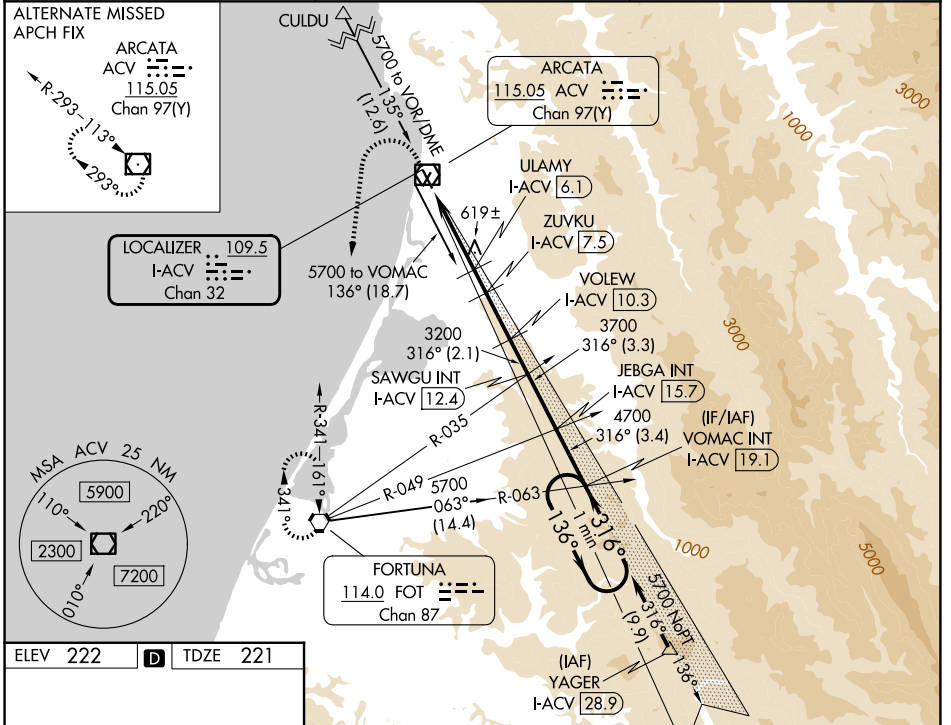
LOC/DME I-ACV 109.5 Chan 32	APP CRS 316°	Rwy Ldg TDZE 5846 221 Apt Elev 222
---	------------------------	--

ILS or LOC RWY 32

CALIFORNIA REDWOOD COAST-HUMBOLDT COUNTY (ACV)

<p>NA Circling NA northeast of Rwy 14-32. DME required.</p>	<p>MALSR</p>	<p>MISSED APPROACH: Climb to 800 then climbing left turn to 3000 direct FOT VORTAC and hold.</p>
--	---------------------	---

<p>ASOS 118.525</p>	<p>SEATTLE CENTER 124.85 306.3</p>	<p>UNICOM 123.0 (CTAF)</p>
---------------------------------------	--	--



CATEGORY	A	B	C	D
S-ILS 32	441/18 220 (300-1/2)			
S-LOC 32	880/24	659 (700-1/2)	880-1 3/8	659 (700-1 3/8)
CIRCLING	880-1	658 (700-1)	880-1 7/8	880-2
			658 (700-1 7/8)	658 (700-2)

SW-2, 16 APR 2026 to 14 MAY 2026

SW-2, 16 APR 2026 to 14 MAY 2026