

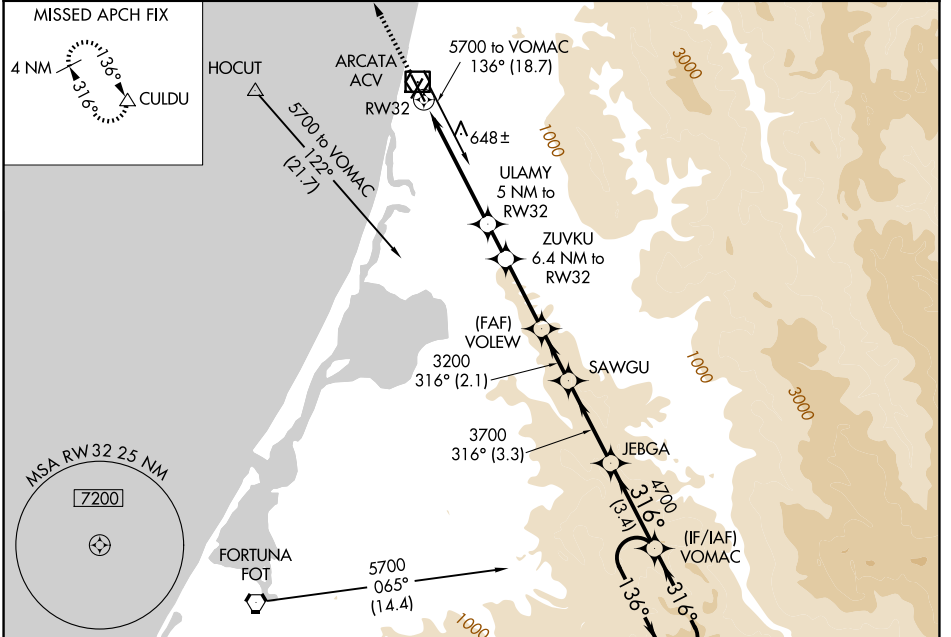
WAAS CH <b>63108</b> <b>W32A</b>	APP CRS <b>316°</b>	Rwy Ldg TDZE <b>221</b> Apt Elev <b>222</b>	<b>5846</b>
----------------------------------------	------------------------	---------------------------------------------------	-------------

# RNAV (GPS) RWY 32

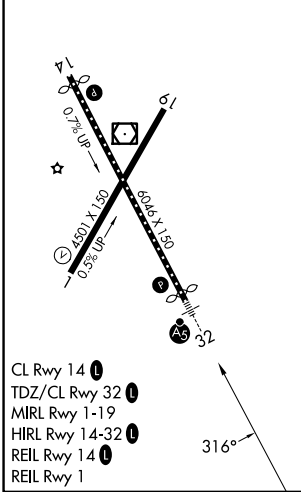
CALIFORNIA REDWOOD COAST-HUMBOLDT COUNTY (ACV)

<b>▼</b> <b>▲</b>	Baro-VNAV NA. Circling NA northeast of Rwy 14-32. DME/DME RNP-0.3 NA.	<b>MALSR</b> 	MISSED APPROACH: Climb to 3000 direct CULDU and hold.
----------------------	--------------------------------------------------------------------------	------------------	-------------------------------------------------------

ASOS <b>118.525</b>	SEATTLE CENTER <b>124.85 306.3</b>	UNICOM <b>123.0 (CTAF)</b>
------------------------	---------------------------------------	-------------------------------



ELEV 222	<b>D</b>	TDZE 221
----------	----------	----------



CL Rwy 14 **1**  
 TDZ/CL Rwy 32 **1**  
 MIRL Rwy 1-19 **1**  
 HIRL Rwy 14-32 **1**  
 REIL Rwy 14 **1**  
 REIL Rwy 1 **1**

3000	CULDU	VGSI and RNAV glidepath not coincident (VGSI Angle 3.00/TCH 43).				JEBGA	VOMAC	5 NM	5700
		ZUVKU	VOLEW	SAWGU				136°	← 316°
		6.4 NM to RW32	3200						
		*LNNAV only.	ULAMY 5 NM to RW32						
		*2 NM to RW32							
		RW32	1860*	2300*	3200	3700	4700		GP 3.00° TCH 47
		2 NM	3 NM	1.4 NM	2.8 NM	2.1 NM	3.3 NM	3.4 NM	
		CATEGORY		A	B	C	D		
		LPV	DA	441/18		220 (300-½)			
		LNNAV/VNAV	DA	1056-2½		835 (900-2½)			
		LNNAV	MDA	900/24 679 (700-½)	900/40 679 (700-¾)	900-1½	679 (700-1½)		
		CIRCLING		900-1	678 (700-1)	900-2 678 (700-2)	900-2¼ 678 (700-2¼)		

SW-2, 16 APR 2026 to 14 MAY 2026

SW-2, 16 APR 2026 to 14 MAY 2026